

NAD **SERVICE**
MANUAL

MONITOR SERIES

7600

AM/FM RECEIVER

Contents

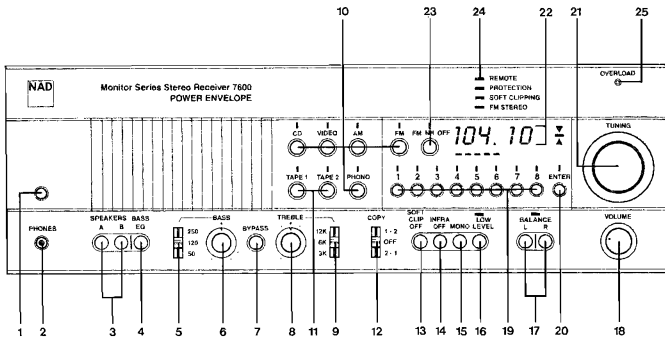
	Page
SPECIFICATIONS	6
BLOCK DIAGRAM	9
ALIGNMENT PROCEDURES	12
WIRING DIAGRAM	15
SCHEMATIC AND PCB LAYOUT	19
EXPLODED VIEW	51
PARTS LIST	56
SCHEMATIC DIAGRAM	67

Version List

- [A] : USA Version
- [A1] : CANADA Version
- [B] : U.K. Version
- [B1] : AUSTRALIA/N.Z. Version
- [C] : EUROPE & OTHERS Version
- [C1] : W.GERMANY Version

FRONT PANEL

- | | | | | |
|----------------------|-------------------------|-------------------------------|-------------------------|-------------------------|
| 1. Power. | 6. Bass. | 11. Tape 1, Tape 2 (Monitor). | 16. Low Level. | 21. Tuning. |
| 2. Phones. | 7. Tone Control Bypass. | 12. Tape Copy. | 17. Balance Left/Right. | 22. Tuning Display. |
| 3. Speaker Selector. | 8. Treble. | 13. Soft Clipping Off. | 18. Volume. | 23. FM NR Off. |
| 4. Bass EQ. | 9. Treble Range. | 14. Infrasonic Filter Off. | 19. Pre-sets. | 24. Status Indicators. |
| 5. Bass Range. | 10. Input Selector. | 15. Mono. | 20. Memory Enter. | 25. Overload Indicator. |

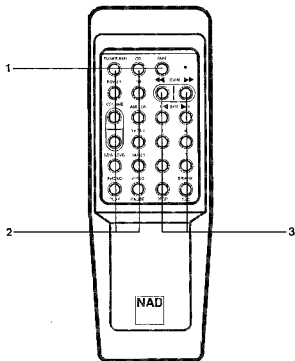
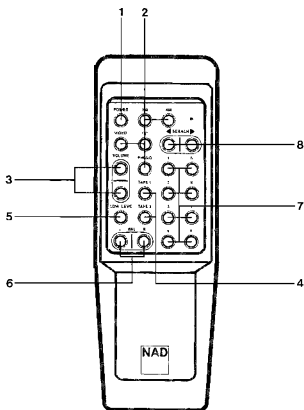


REMOTE CONTROL

- | | |
|------------------------------|--------------------------|
| 1. Power. | 5. Low Level. |
| 2. Input Selector. | 6. Balance Left/Right. |
| 3. Volume Up/Down. | 7. Station Pre-sets. |
| 4. Tape 1, Tape 2 (Monitor). | 8. Tuning Search Up/down |

UNIFIED REMOTE CONTROL

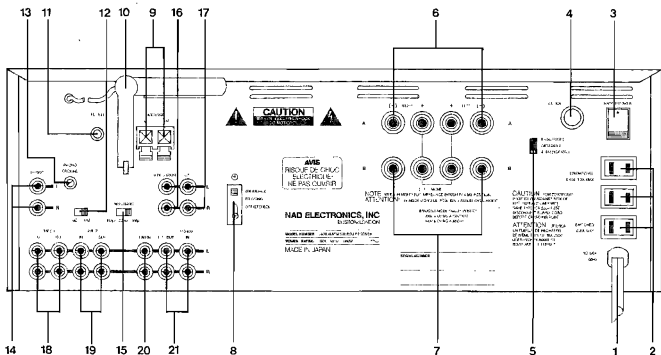
- | | |
|----------------------------|----------------------|
| 1. Mode Selection | 3. Station Selection |
| 2. Signal Source Selection | CD Tracks |
| Volume | Tape Locations |
| Playback Controls | |



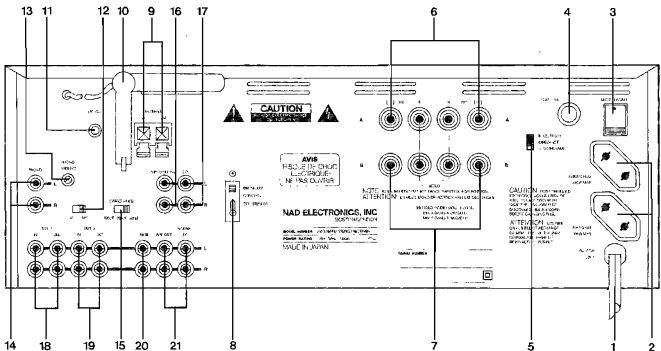
REAR PANEL (For A, A1 Version)

- | | | |
|-------------------------|--------------------------|----------------------------------|
| 1. AC Line Cord. | 8. Bridging | 15. Phono Capacitance (MM only). |
| 2. AC Outlets. | 9. AM Antenna Terminals. | 16. Video Sound Input. |
| 3. Master Power Switch. | 10. AM Rod Antenna. | 17. CD Input. |
| 4. AC Fuse. | 11. FM Antenna Input. | 18. Tape 1 Input/Output. |
| 5. Speaker Impedance. | 12. MM/MC. | 19. Tape 2 Input/Output. |
| 6. Speakers A. | 13. Phono Ground. | 20. Lab Input. |
| 7. Speakers B. | 14. Phono Input. | 21. Preamp Out, Normal In. |

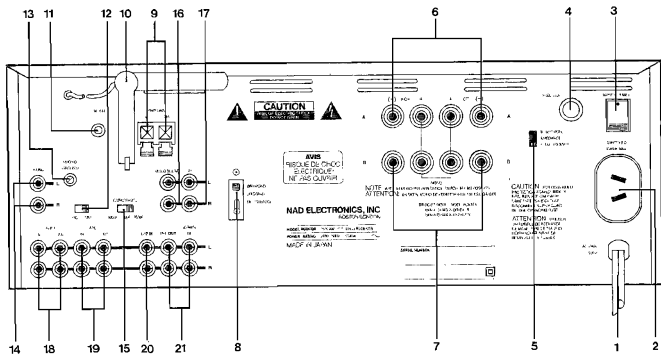
CAUTION
 CAUTION TO REDUCE THE RISK OF ELECTRIC SHOCK, DO NOT REMOVE COVER OR BACK. NO USER SERVICEABLE PARTS INSIDE. REFER SERVICE PERSONNEL TO QUALIFIED SERVICE PERSONNEL.



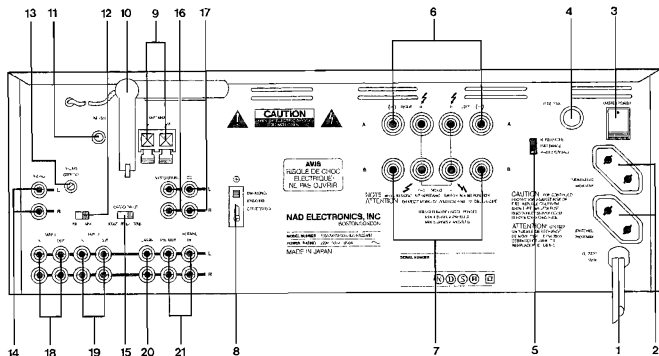
(For B Version)



(For B1 Version)



(For C, C1 Version)



SPECIFICATIONS

FEATURES

A. CONTROLS AND SWITCHES

- Function Selector switch : CD/VIDEO/PHONO/ : Sensor type
FM/AM
- Tuning control : Up/Down : Rotary type
- Volume control : Min/Max : Rotary type
- Low Level switch : On/Off : Push type
- Enter switch : On : Sensor type
- Preset switch (1-8) : On : Sensor type
- Mono switch : Stereo/Mono : Push type
- Bass control : Min/Max : Rotary type
- Treble control : Min/Max : Rotary type
- Tone Bypass switch : On/Off : Push type
- Tape Monitor switch : Tape 1/Tape 2 : Sensor type
- Dubbing switch : 1→2/Off/2→1 : Lever type
- Speaker Selector switch : A/B : Push type
- Bass EQ switch : On/Off : Push type
- Balance control : Left/Right : Sensor type
- FM NR Off switch : On/Off : Sensor type
- AC Power switch : On/Off : Sensor type
- Soft Clipping switch : On/Off : Push type
- Infrasonic switch : On/Off : Push type
- Bass Turnover switch : 250/120/50Hz : Lever type
- Treble Turnover switch : 12/6/3kHz : Lever type
- FM De-Emphasis switch : 75/50 μsec : Slide type (Inside)
- Scan Step switch : AM 9/10kHz : Slide type (Inside)
- PHONO switch : MC/MM : Slide type (Rear)
- PHONO Capacitance Loading switch : 100/200/300 pF : Slide type (Rear)
- Bridging switch : Stereo/Mono : Slide type (Rear)
- Speaker Impedance switch : 4/8Ω : Slide type (Rear)
- Master Power switch : On/Off : Rocker type (Rear)

B. EXTERNAL CONNECTIONS

- AM antenna : 2 p terminal
- FM antenna : 75Ω F-type coaxial terminal
- Phono input (L/R) : RCA type pin jack (2p)
- Lab input (L/R) : RCA type pin jack (2p)
- CD input (L/R) : RCA type pin jack (2p)
- Video input (L/R) : RCA type pin jack (2p)
- Tape monitor input (L/R)×2 : RCA type pin jack (4p)
- Pre output (L/R) : RCA type pin jack (2p)
- Normal input (L/R) : RCA type pin jack (2P)
- Recording output (L/R)×2 : RCA type pin jack (4p)
- AC Line cord : UL type
- Speaker system A : Army type binding post for banana plug [A][A1][B][B1] not for banana plug [C][C1]
- Speaker system B : Army type binding post for banana plug [A][A1][B][B1] not for banana plug [C][C1]

C. OUTPUT LOAD

- Speaker output : 8Ω/4Ω
- Headphone output : 8Ω
- Recording output : 10KΩ

D. AC POWER SUPPLY

- 120V/60Hz [A][A1]
240V/50Hz [B][B1]
220V/50Hz [C][C1]

E. REMOTE CONTROL TRANSMITTER

- Volume control : Up/Down : Sensor type
- Power switch : On/Off : Sensor type
- Memory switch (1-8) : On : Sensor type
- Search : Up/Down : Sensor type
- Low Level : On/Off : Sensor type
- Tape : Tape 1/Tape 2 : Sensor type
- Function Selector : Phono/CD/VIDEO/ : Sensor type
FM/AM
- Power supply : UM3×2
- Size : W=60 H=180 D=36(mm)

F. UNIFIED REMOTE CONTROL TRANSMITTER

- Volume control : Up/Down : Sensor type
- Power switch : On/Off : Sensor type
- Low Level : On/Off : Sensor type
- Tuner Amp. (Mode Selector) : On : Sensor type
- 4-1. Band Selector : AM/FM : Sensor type
- 4-2. Memory switch (1-8) : On : Sensor type
- 4-3. Frequency control : Up/Down : Sensor type
- CD (Mode/Function Selector) : On : Sensor type
- 5-1. Scan : Up/Down : Sensor type
- 5-2. Skip : Up/Down : Sensor type
- 5-3. Play : On : Sensor type
- 5-4. Pause : On : Sensor type
- 5-5. Stop : On : Sensor type
6. Tape (Mode Selector) : On : Sensor type
- 6-1. F.F. : On : Sensor type
- 6-2. Rew : On : Sensor type
- 6-3. Play : On : Sensor type
- 6-4. Pause : On : Sensor type
- 6-5. Stop : On : Sensor type
- 6-6. Rec : On : Sensor type
7. Other Function Selector : PHONO/VIDEO
8. Tape : Tape 1/Tape 2
9. Power supply : UM3×2
10. Size : W=60 H=180 D=36 (mm)

G. DIMENSIONS AND NET WEIGHT

- Dimensions : W=435 H=150 D=422(mm)
- Net Weight : 16.5Kg

[A] : USA Version
[A1] : CANADA Version

[B] : U.K. Version
[B1] : AUSTRALIA/N.Z. Version

[C] : EUROPE & OTHERS Version
[C1] : W.GERMANY Version

ELECTRICAL SPECIFICATION

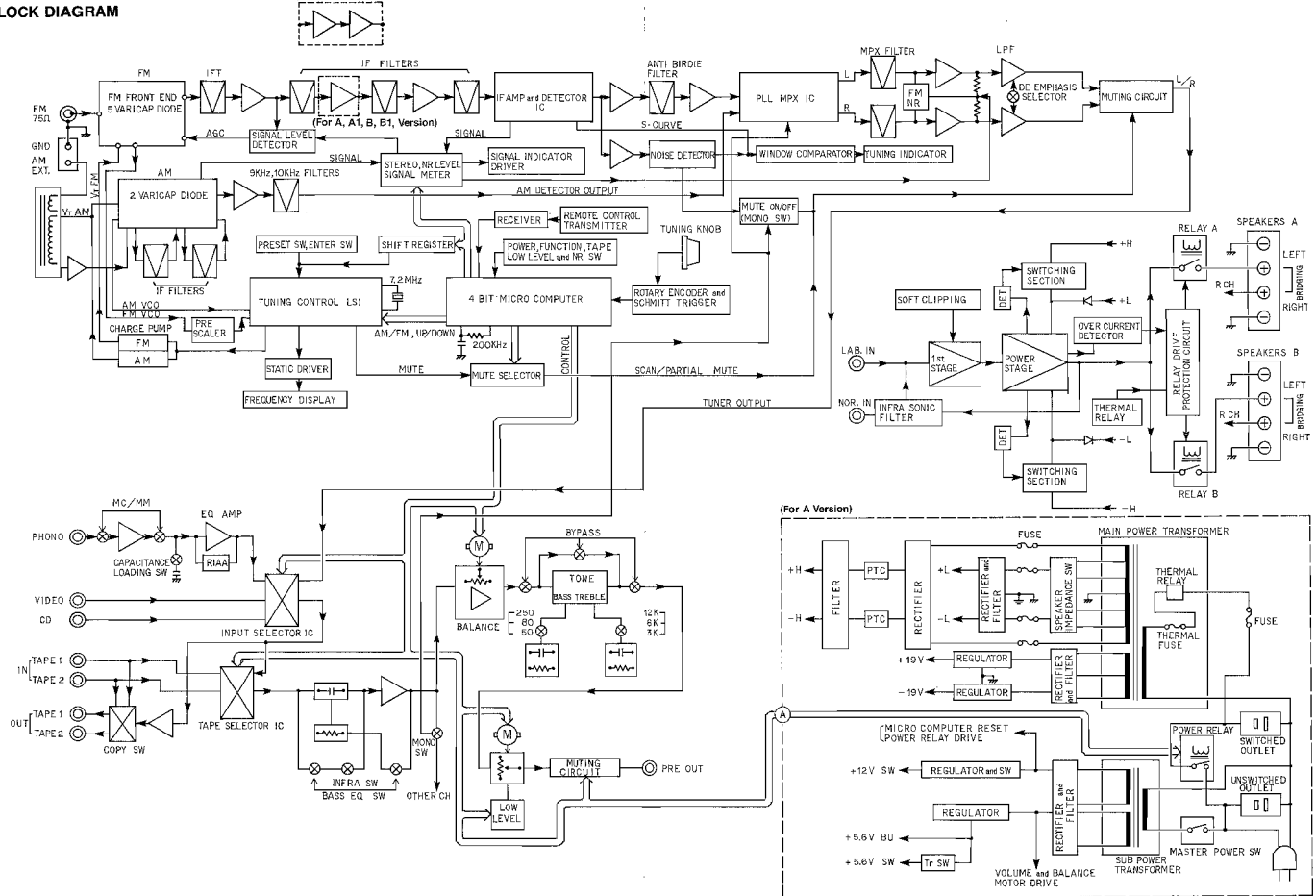
	Nominal	Limit	Unit	
A. AM Section at 1000 kHz [A][A1]/999 kHz [B][B1][C][C1]				
1. 20 dB quieting sensitivity	200	400	$\mu\text{V/m}$	
2. Selectivity at S/N 20 dB input ± 10 kHz [A][A1]/ ± 9 kHz [B][B1][C][C1]	55	50	dB	
3. IF rejection ratio	65	60	dB	
4. Image rejection ratio	40	35	dB	
B. FM Section (at 98 MHz)				
1. IHF (usable) sensitivity	0.9(10.3)	1.4(14.2)	$\mu\text{V(dB)}$	[A][A1][B][B1][C][C1]
	1.12(12.2)	1.70(16.3)	$\mu\text{V(dB)}$	[C]
	1.58(15.3)	2.51(19.3)	$\mu\text{V(dB)}$	[C1]
2. 50 dB quieting sensitivity	1.1(12.2)	1.8(16.4)	$\mu\text{V(dB)}$	[A][A1]
	1.41(14.2)	2.24(18.3)	$\mu\text{V(dB)}$	[B][B1]
	1.58(15.2)	2.51(19.2)	$\mu\text{V(dB)}$	[C]
	2.0(17.3)	3.16(21.3)	$\mu\text{V(dB)}$	[C1]
3. S/N ratio at 65 dBf input	85	80	dB	[A][A1]
	84	79	dB	[B][B1][C][C1]
4. Frequency response ± 0.5 range at 85 dBf input	20-15K	30-12K	Hz	
5. Capture ratio	1.5	2.5	dB	[A][A1][B][B1][C][C1]
	5.0	6.0	dB	
6. Alternate channel selectivity	80	75	dB	
7. Image response ratio at 106 MHz	>110	>110	dB	
8. IF response ratio at 90 MHz	>110	>110	dB	
9. AM suppression at 65 dBf input	62	56	dB	
10. Adjacent channel selectivity	27	22	dB	[C][C1]
C. FM MPX Section (at 98 MHz)				
1. Stereo 60 dB quieting Sensitivity	14(34.2)	20(37.2)	$\mu\text{V(dBf)}$	[A][A1]
FM NR ON	15.8(35.3)	22.4(38.3)	$\mu\text{V(dBf)}$	[B][B1]
	17.8(36.3)	25.1(39.3)	$\mu\text{V(dBf)}$	[C]
	22.4(38.3)	31.6(41.3)	$\mu\text{V(dBf)}$	[C1]
FM NR OFF	50(45.2)	70(46.2)	$\mu\text{V(dBf)}$	[A][A1]
	63(44.7)	89(45.3)	$\mu\text{V(dBf)}$	[B][B1]
	56.3(46.3)	79.5(49.3)	$\mu\text{V(dBf)}$	[C]
	70.8(48.3)	100(51.3)	$\mu\text{V(dBf)}$	[C1]
2. S/N ratio, at 85 dBf input	80	76	dB	[A][A1]
	79	75	dB	[B][B1][C][C1]
3. SCA rejection		>70	dB	
D. Audio Section				
Preamplifier Section				
1. Input Impedance at 1 kHz			Ω	
Phono MC [C=1000 pF]	100	$\pm 10\%$	Ω	
Phono MM [C=100, 200, 320 pF]	47	$\pm 10\%$	K Ω	
CD, Tape 1/2, Video	47	$\pm 20\%$	K Ω	
2. Sensitivity for rated power			mV	
Phono (MM/MC)	2.5/0.15	± 2 dB	mV	
CD, Tape 1/2, Video	150	± 2 dB	mV	
3. Max input signal at clipping level (measured at tape out) 1% THD (1 kHz)			mV	
Phono (MM/MC)	190/12	160/10	mV	
CD, Tape 1/2, Video	8	6	V	
4. Frequency response from 20 Hz-20 kHz			dB	
CD, Tape 1/2, Video	± 0.3	± 0.8	dB	
5. S/N ratio (Speaker Out at 1W)			dB	
A-Weighted			dB	
Phono MM (5 mV input & 1 K Ω shorted)	85	78	dB	
Phono MC (500 μV input & 100 Ω shorted)	78	76	dB	
CD, Tape 1/2, Video (Input 1 K Ω shorted)	94	88	dB	
Flat			dB	[A][A1][B][B1][C][C1]
Phono MC (500 μV input & shorted)	68	66	dB	[C]
	65	63	dB	
6. Tone control response			dB	
Bass; at 250 Hz, 120 Hz, 50 Hz	± 12	$\pm 12 \pm 2$	dB	
Treble; at 12 kHz, 6 kHz, 3 kHz	± 12	$\pm 12 \pm 2$	dB	
7. Channel balance at VR maximum	-3	-3 ± 2	dB	
8. Channel filter at 11 Hz (12 dB/Oct)	0	± 1	dB	
9. PhonoEQ (RIAA) response (measured at tape out) RIAA			dB	
MC; from 30 Hz to 20 kHz	± 0.3	± 0.8	dB	
MM; from 20 Hz to 20 kHz	± 0.3	± 0.8	dB	

	Nominal	Limit	Unit	
10. Output impedance				
Pre out	800		Ω	
Tape 1/2 out	1		K Ω	[A][A1][B][B1][C][C1]
	3.2		K Ω	
11. Speaker Equalization (Bass EQ.)				
at 60 Hz	+3	± 2	dB	
at 37 Hz	+6	± 2	dB	
12. Cross talk at 10 kHz	70	65	dB	
Poweramplifier section				
1. Power output, from 20 Hz to 20 kHz rated THD (0.05%)				
Both channels driven, 8 Ω load		more than 150	W	
2. Total harmonic distortion from 20 Hz to 20 kHz at rated power		less than 0.05	%	
at 20 Hz, 1 kHz and 20 kHz				
3. Clipping Power, 8 / 4 Ω load	180/200	160/180	W	
Input: Video				
Output: 1% THD, 1 kHz continuous Both CH. Driven				
4. Dynamic Power (Both CH. Driven), 8 / 4 Ω load	400/500	350/440	W	
Input: Video Output: Clipping point, 1 kHz 20 ms IHF dynamic wave				
5. IM Distortion (Both CH. Driven), 8 Ω load		less than 0.05	%	
Input: Video 60 Hz : 7000 Hz = 4 : 1				
Output: From 250 mW to 150 W				
6. Frequency response (Output 1 W)		± 0.5	dB	
Input: LAB in 20-20000 Hz		-3	dB	
Input: Nor in 5t 14 Hz and 40 kHz	120	100	dB	
7. Damping factor at 50 Hz, 8 Ω load		more than 20	K Ω	
8. Input impedance	50	45	A	
9. Soft clipping level (When switched in just at onset of clipping), 8 / 4 Ω load	-0.5	-0.5 \pm 0.4	dB	
10. Peak short term (1 msec.) O/P current	50	45	A	
11. Input Sensitivity (Output 150 W), 8 Ω load	1	1 \pm 1	dB	
12. T.H.D. (Output: No load (60V))		less than 1	%	

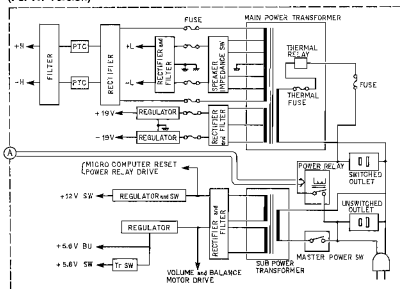
Specifications and design are subject to change without notice.

BLOCK DIAGRAM

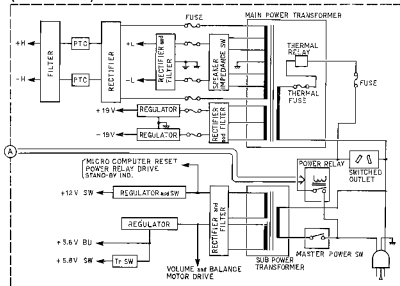
(For C, C1 Version)



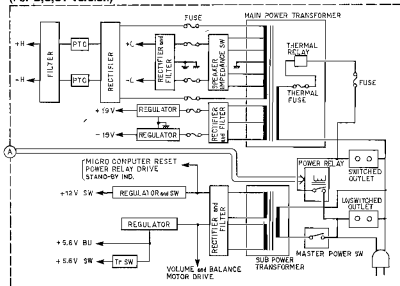
(For A1 Version)



(For B1 Version)



(For B,C,C1 Version)



ALIGNMENT PROCEDURES

Amplifier

Condition

1. SPEAKER IMPEDANCE SW (Rear Panel): 4-8Ω (NORMAL)
2. SPEAKER Selector: A position
3. SPEAKER A load: 8Ω dummy

IDLING

1. Set the VOLUME control to minimum.
2. No input.
3. Preheat more than 15 minutes.
4. Connect the DC digital volt meter to TP601 (L)/TP602 (R).
5. Adjust SVR603 (L)/SVR604 (R) for $7.5 \pm 0.5\text{mV}$.

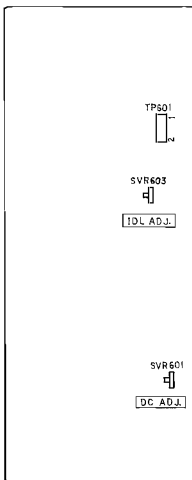
OFFSET VOLTAGE

1. Set the VOLUME control to minimum.
2. No input.
3. Connect the DC digital volt meter to the SPEAKER TERMINAL A (L/R).
4. Adjust SVR601 (L)/SVR602 (R) for between -5mV and $+5\text{mV}$.

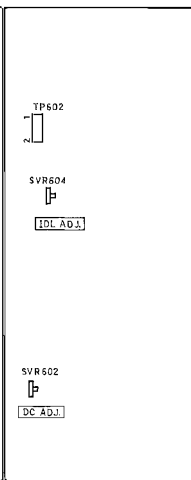
L/R OUTPUT BALANCE

1. Set the VOLUME control to maximum.
2. Connect the audio generator to both channels of VIDEO.
3. Set the Mono switch and the LOW LEVEL SW to OFF position.
4. Set the input frequency to 1kHz and 3V at the Left CH of SPEAKER OUTPUT.
5. Adjust SVR501 for $3\text{V} \pm 0.1\text{dB}$ at the right CH.

ML P.C.Board



MR P.C.Board



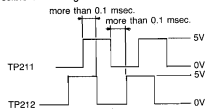
SV P.C.Board



Tuner

ENCODER LEVEL

1. Connect the dual trace oscilloscope to the test point TP211/TP212, monitor the rotary encoder output.
2. Adjust SVR201 until the overlap part of output waveform is more than 0.1 msec. at the test point TP211/TP212 when turn as fast as possible the tuning knob.



AM

Condition

1. Tuning method: Tuning indicator ON or the output is maximum.
2. Modulation: 400Hz, 30%
3. Generator output: IRE Loop antenna 24" (60cm) spacing.
4. Preheat: More than 1 minute.

TUNING VOLTAGE

1. No input.
2. Connect the DC digital volt meter to the test point TP101 and GND.
3. Set the tuner frequency to F1 kHz.
4. Adjust TC102 for 30±0.1V.
5. Set the tuner frequency to F2 kHz.
6. Adjust T101 for 1.6±0.05V.

IF

1. Set the tuner frequency to the point of non-interference.
2. Connect the output of IF sweep generator to the test point TP102 through IHF dummy and set the frequency to 450±0.5kHz.
3. Connect the input of IF sweep generator to the test point TP103 through a 10μF cap.
4. Adjust T102/T103 for flat and maximum output.

TRACKING

1. Set the tuner frequency to F3 kHz.
2. Connect the output of signal generator to IRE Loop and set the frequency to F3 kHz.
3. Connect the ACVM to TAPE OUT jacks.
4. Adjust TC101 for maximum output.
5. Change the tuner frequency to F4 kHz.
6. Adjust the Bar antenna for maximum output.

SIGNAL METER

1. Set the tuner frequency to F5 kHz.
2. Set the input level to 84dBm.
3. Adjust SVR101 until the signal indicators fully light up.

MUTING LEVEL

1. Set the input level to 48dBm.
2. Short TP141 to ground.
3. Adjust SVR102 until the tuning indicator lights up.

AM Frequency table

	A, A1	B, B1, C, C1
F1	1710	1710
F2	520	522
F3	1400	1404
F4	600	603
F5	1000	999

[A] : USA Version
[A1] : CANADA Version

[B] : U.K. Version
[B1] : AUSTRALIA/N.Z. Version

[C] : EUROPE & OTHERS Version
[C1] : W.GERMANY Version

FM

Condition

1. Tuning method: Tuning indicator ON
2. Generator: Mono~1kHz, 75kHz dev.
3. Stereo~1kHz, 75kHz dev. pilot 9%
3. TAPE OUT load: 100kΩ resistor shunted by 1000pF capacitor.
4. Input level: 65dBf unless otherwise noted.
5. De-Emphasis switch(SW061): 75μs Position.
6. Preheat more than 1 minute.

TUNING VOLTAGE

1. Connect the DC digital volt meter to TP001 and GND.
2. Set the tuner frequency to 87.50MHz.
3. Adjust OSC-L (Front end) for 3.6±0.2V.
4. Change the tuner frequency from 87.50MHz to 108.00MHz.
5. Check for 30.0±0.1V.

V.C.O

1. Connect the frequency counter to TP003.
2. Set the tuner frequency to 98.00MHz.
3. Adjust TC201 for 108.700MHz±3kHz.

IF

1. Connect the ACVM and the distortion meter to TAPE OUT jacks.
2. Connect the DC digital volt meter to TP002.
3. Set the tuner frequency to 98.00MHz.
4. Set the input level to V1 dBf.
5. Set the Mono switch to ON position. (Partial mute OFF)
6. Adjust IFT (Front end) and T001 for minimum distortion.
7. Change the input level to 65dBf.
8. Adjust T002 (PRI) for between -20mV and +20mV.
9. Adjust T002 (SEC) for minimum distortion.

TRACKING

1. Set the tuner frequency to 106.00MHz.
2. Set the input level to V1 dBf.
3. Adjust ANT-TC1, 2, 3 and 4 (Front end) for minimum distortion or maximum output.
4. Change the tuner frequency to 90.00MHz.
5. Adjust ANT-L1, 2, 3 and 4 (Front end) for minimum distortion or maximum output.

SIGNAL METER

1. Set the input level to 71.3dBf.
2. Adjust SVR141 until the topmost of signal indicators light up.

STEREO LEVEL

1. Set the tuner frequency to 98.00MHz.
2. Set the input level to 24.3dBf.
3. Set the Mono switch to OFF position.
4. Adjust SVR142 until the STEREO indicator lights up.

SEPARATION

1. Change the input level to 65dBf.
2. Connect the ACVM to TAPE OUT jacks.
3. Adjust SVR061 for best separation.

PILOT LEAK LEVEL

1. Change the modulation to pilot only.
2. Adjust T061 (L)/T062 (R) for minimum leak level.

L/R OUTPUT LEVEL

1. Change the modulation from stereo to mono.
2. Adjust SVR062 until the right CH level is the same as the left CH level.

SCAN STOP LEVEL

1. Set the input level to V2 dBf.
2. Connect the DC volt meter to the cathode of D152 or D153.
3. Adjust SVR001 until the voltage changes 5V from 0V.

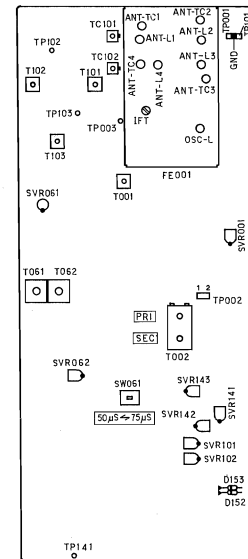
FM NR LEVEL

1. Set the input level to V3 dBf.
2. Change the modulation from mono to stereo.
3. Connect the ACVM to TAPE OUT jacks.
4. Adjust SVR143 for 60dB S/N in stereo.

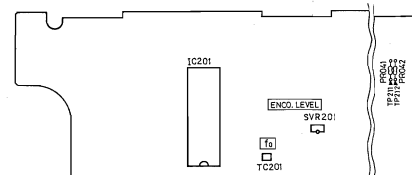
FM Input Level table

	A,A1	B,B1	C	C1
V1	8.3~10.3	8.3~10.3	12.3~15.3	12.3~15.3
V2	29.3	29.3	27.3	27.3
V3	34.3	35.3	36.3	38.3

TIM P.C.Board

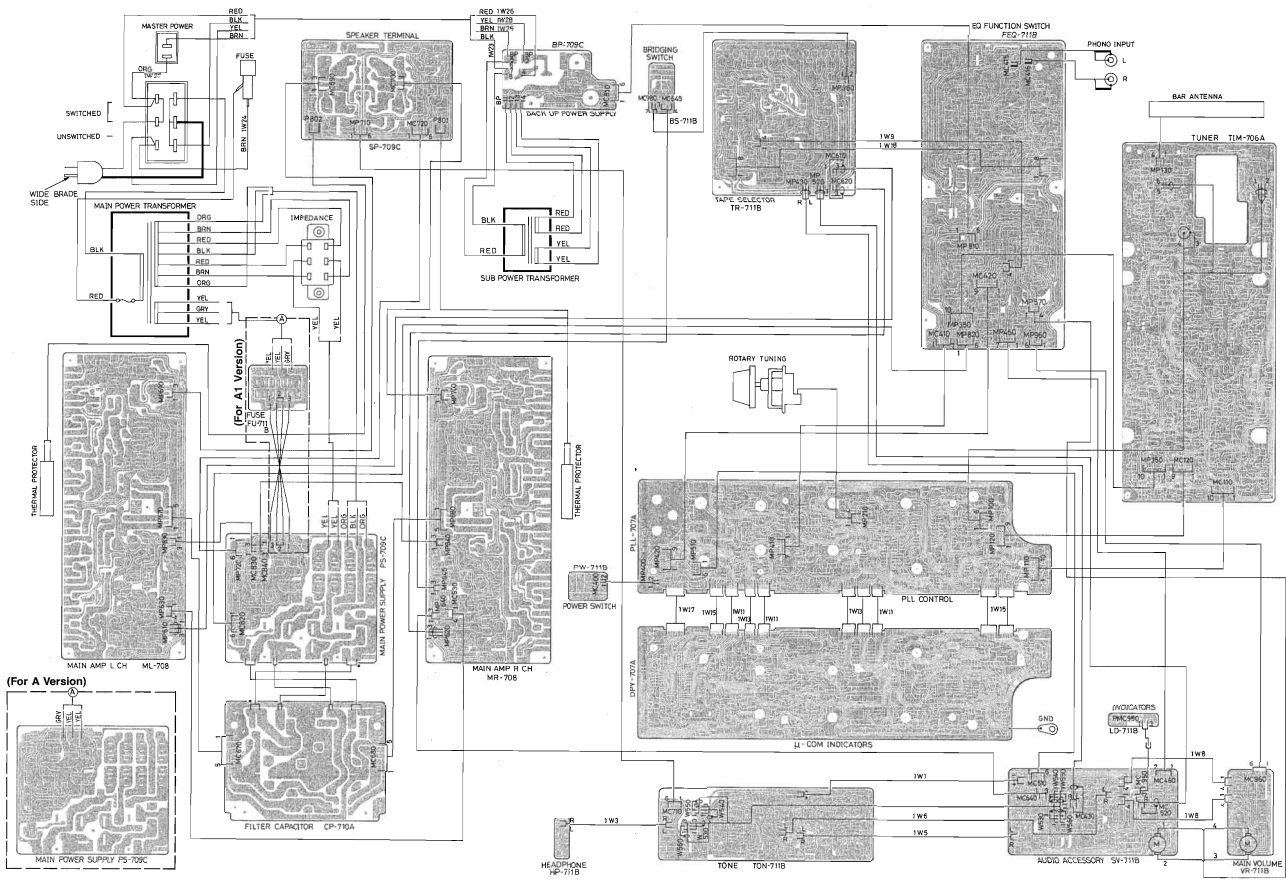


PLL P.C.Board



WIRING DIAGRAM (Component side)

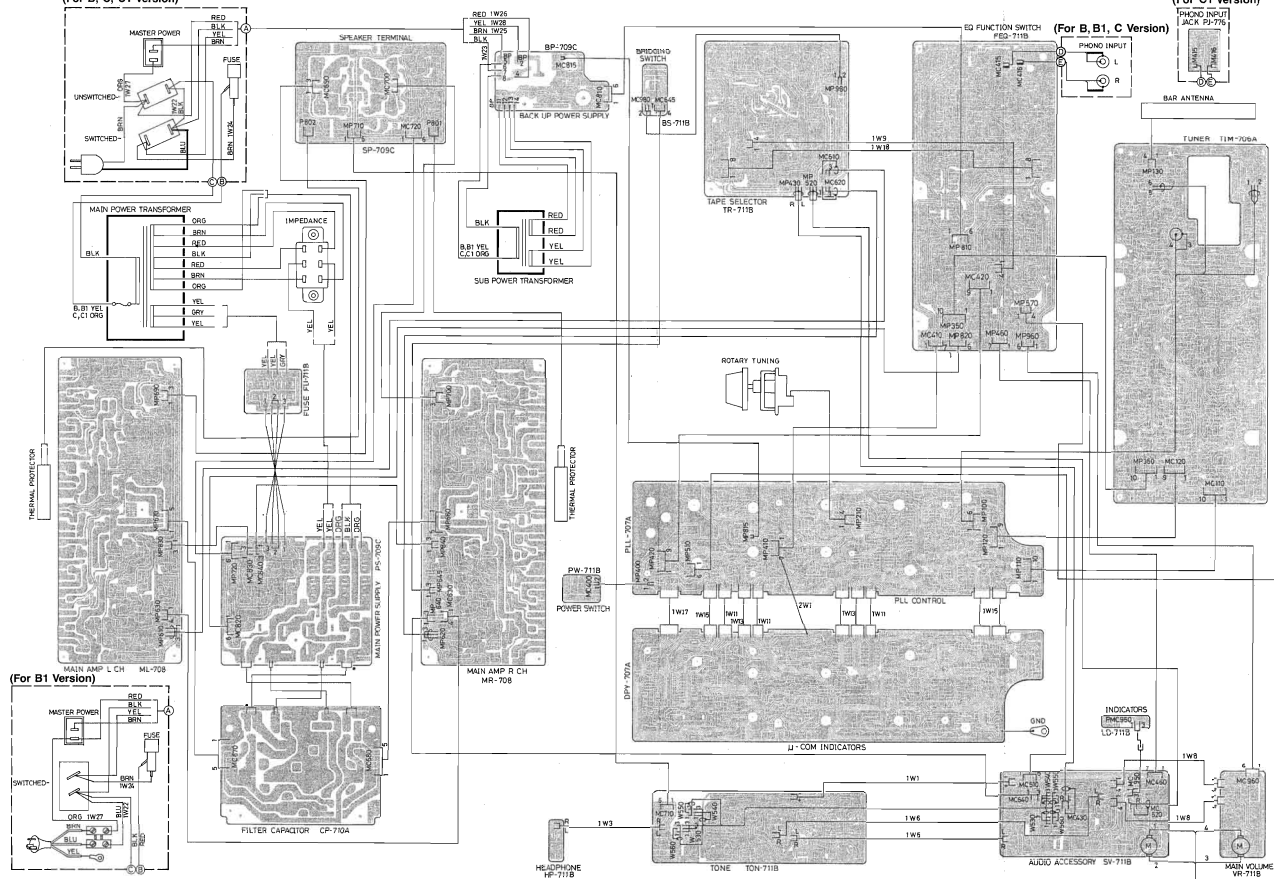
(For A,A1 Version)

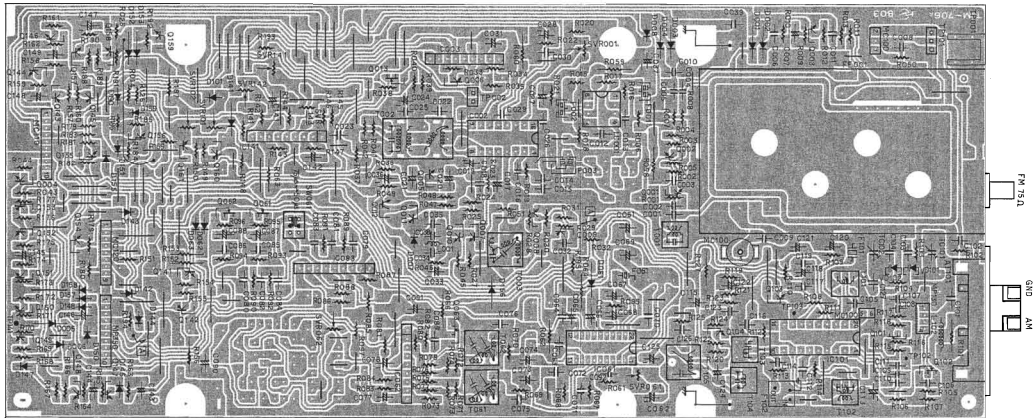


(For B,B1,C,C1 Version)

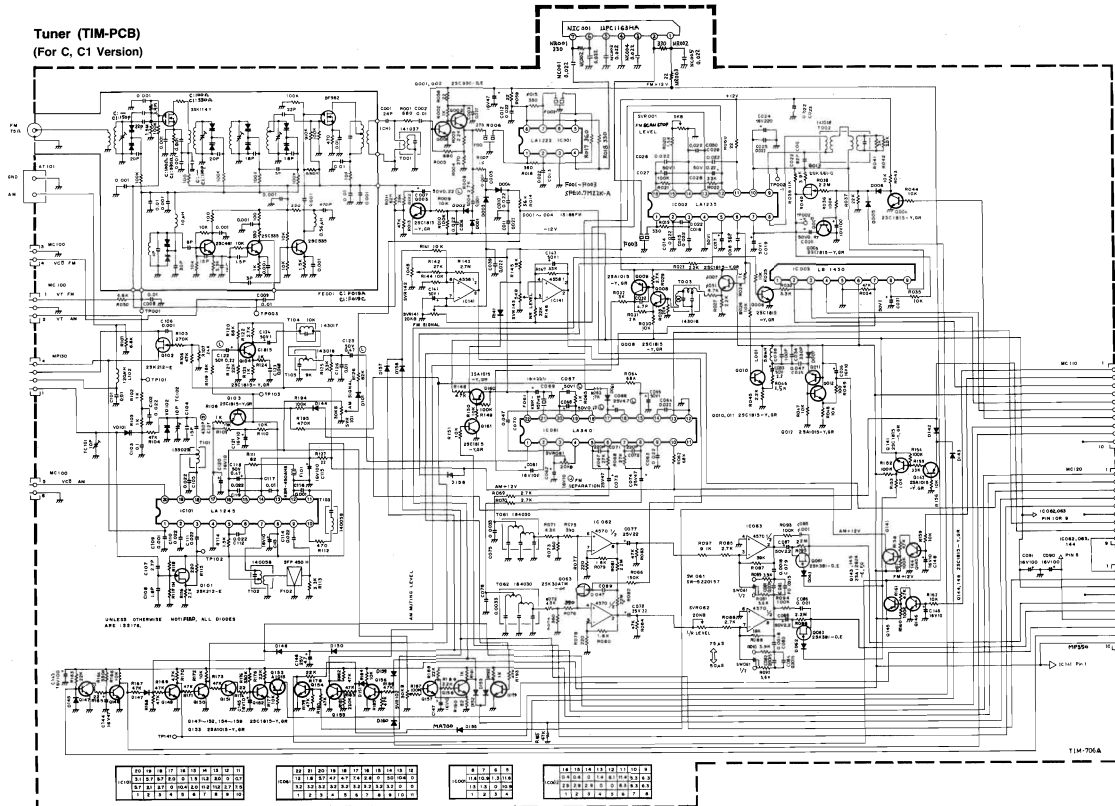
(For B, C, C1 Version)

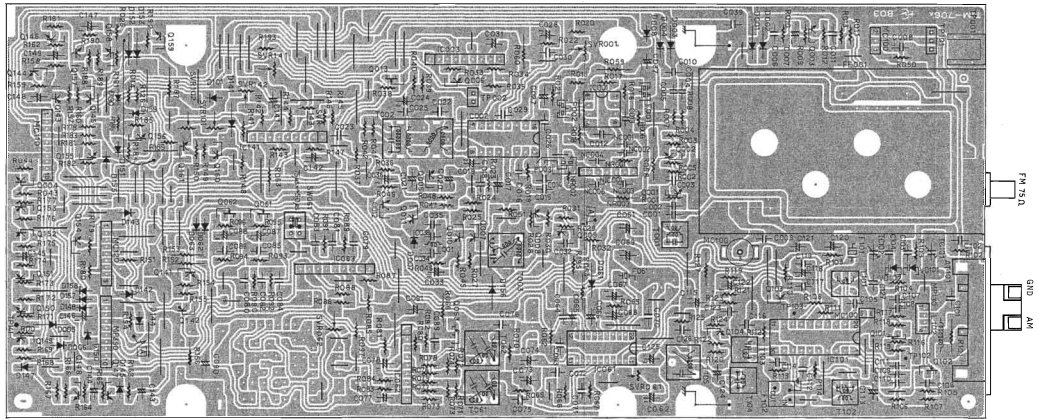
(For C1 Version)



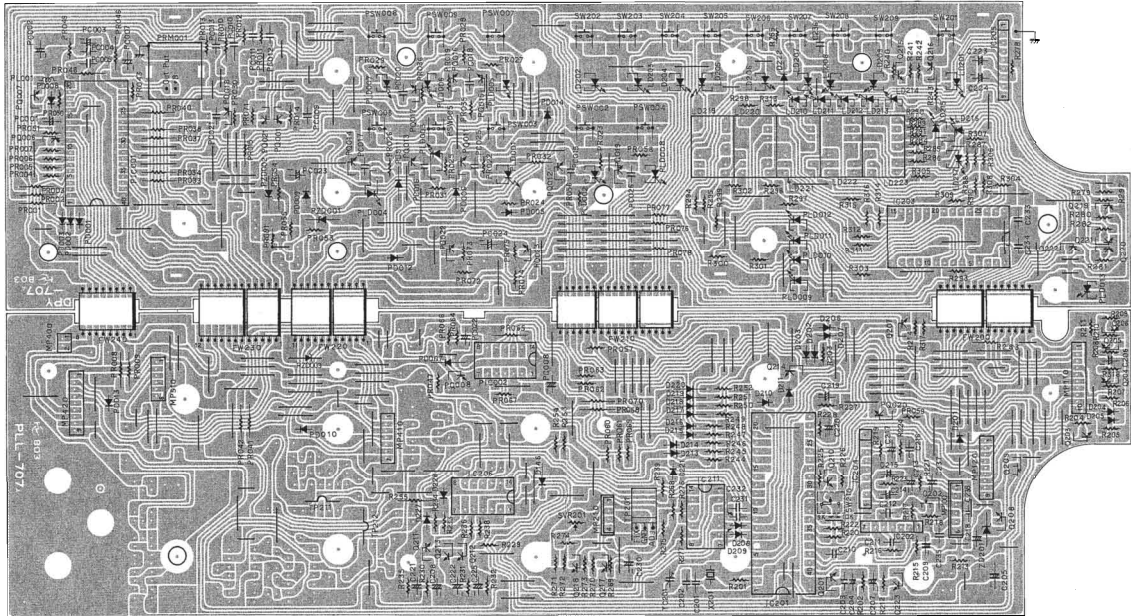


Tuner (TIM-PCB)
(For C, C1 Version)



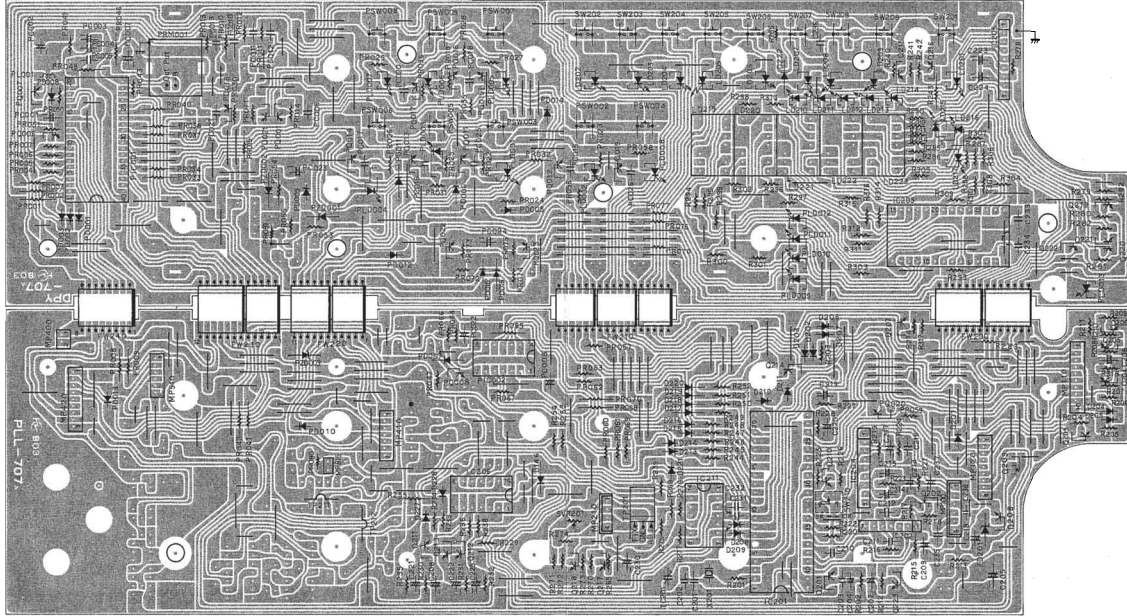


(DPY)



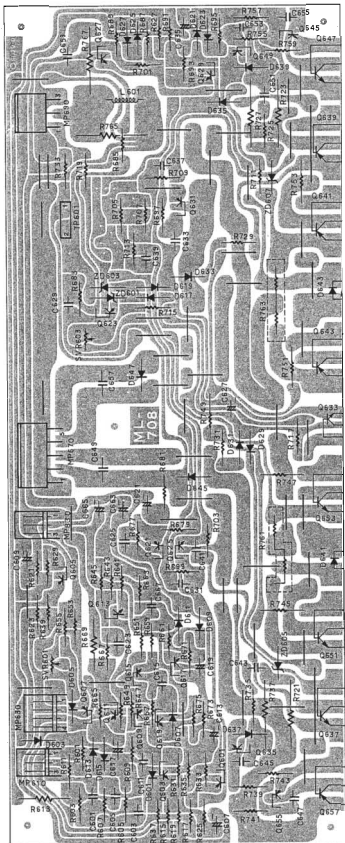
(PLL)

(DPY)

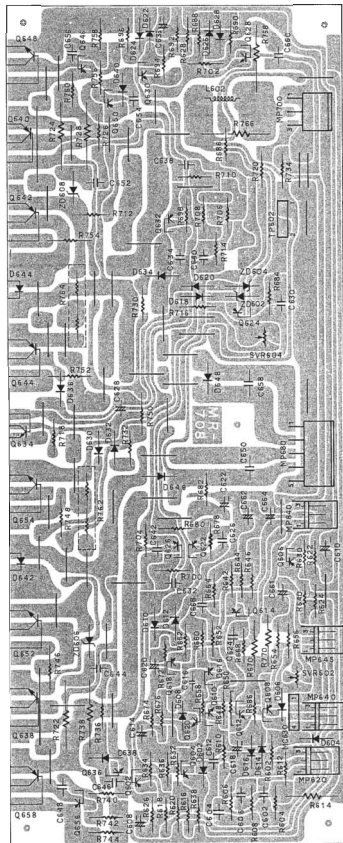


(PLL)

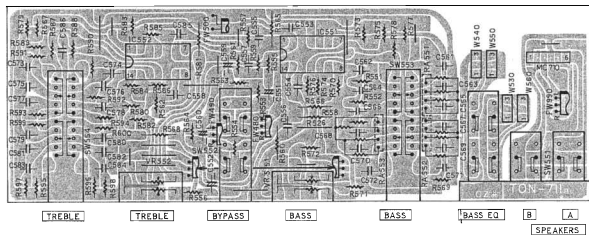
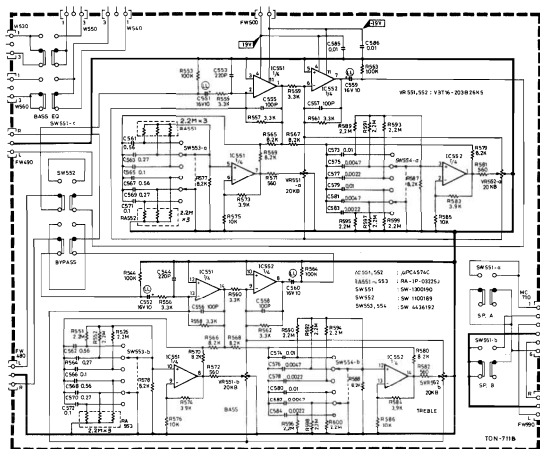
(ML)



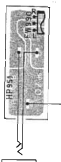
(MR)



Tone (TON-PCB)

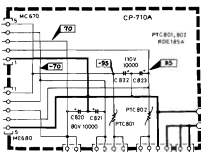


Headphone (HP-PCB)

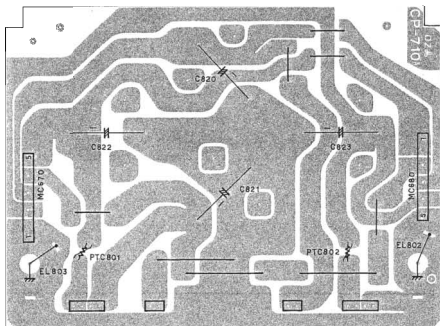
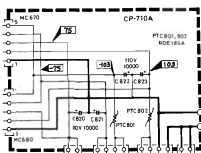


Filter Capacitor (CP-PCB)

(For A, A1 Version)

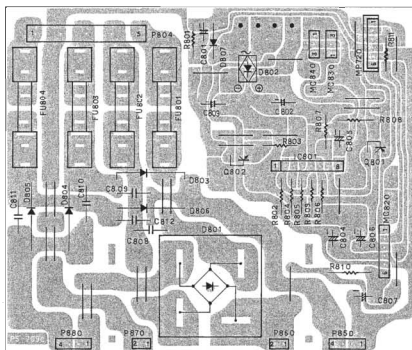
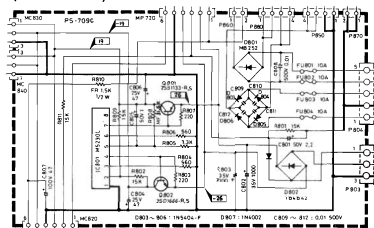


(For B, B1, C, C1 Version)

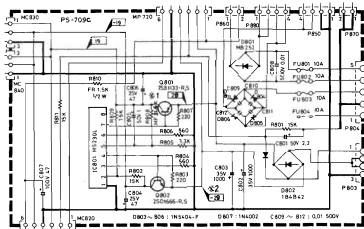


Main Power Supply (PS-PCB)

(For A1 Version)

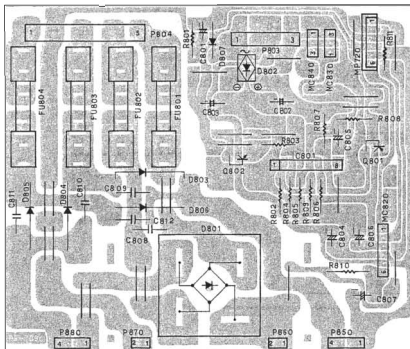


(For A, B, B1, C, C1 Version)



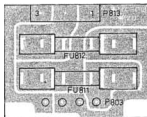
*1
A1 Version = 26
Other Version = 29

*2
A1 Version = -26
Other Version = -29

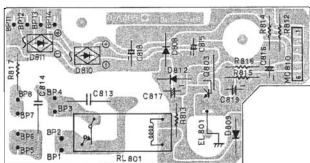
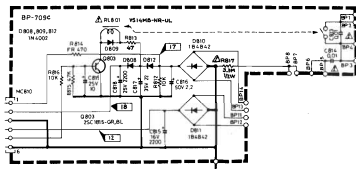


Fuse (FU-PCB)

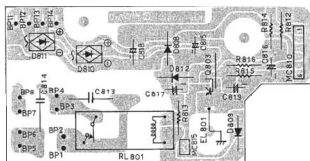
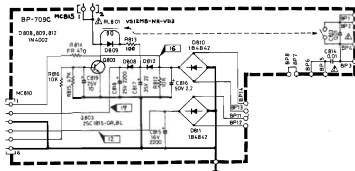
(For A1, B, B1, C, C1 Version)



Back Up Power Supply (BP-PCB)
(For A, A1 Version)

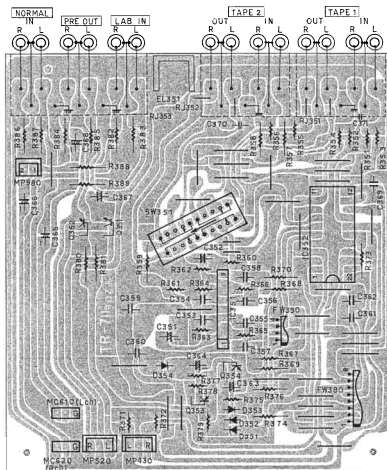
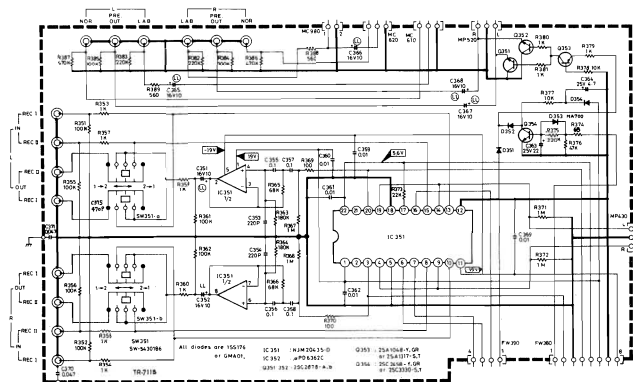


(For B, B1, C, C1 Version)

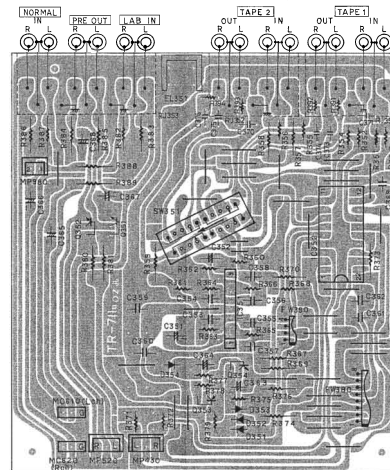
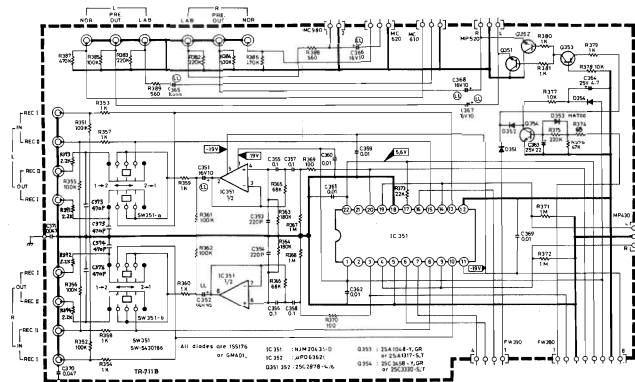


Tape Selector (TR-PCB)

(For A, A1, B, B1, C Version)

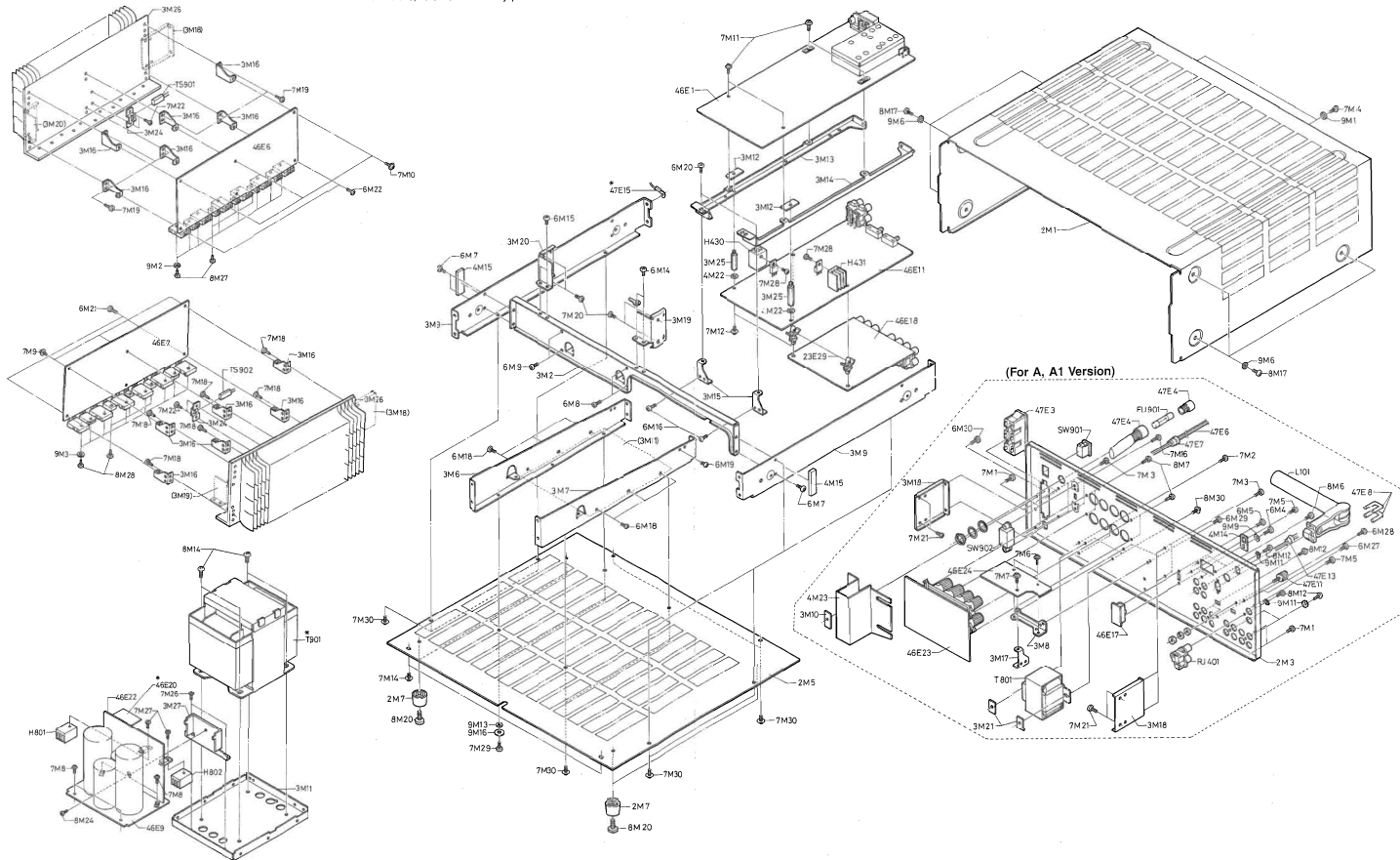


(For C1 Version)

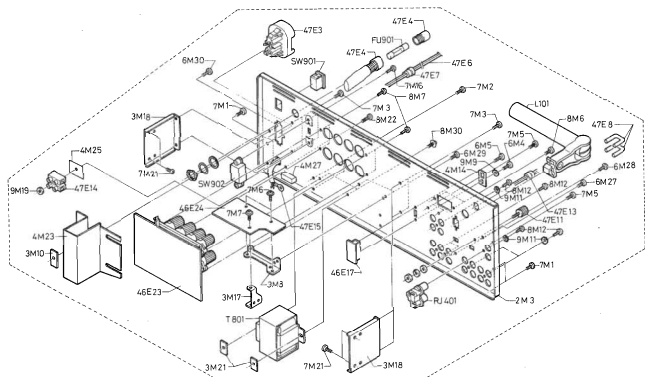


EXPLODED VIEW
Rear Panel and Chassis

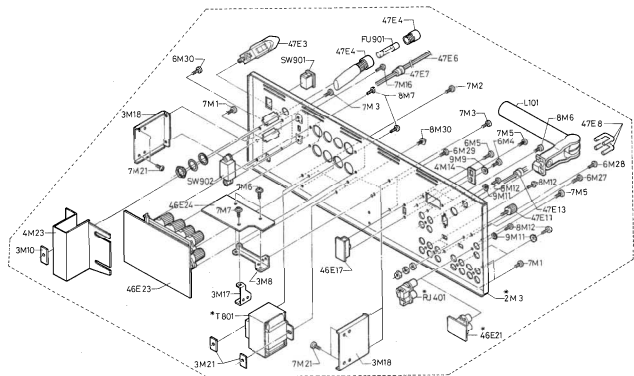
* Parts marked with * vary according to destinations.
 For details, refer to the classify parts list.



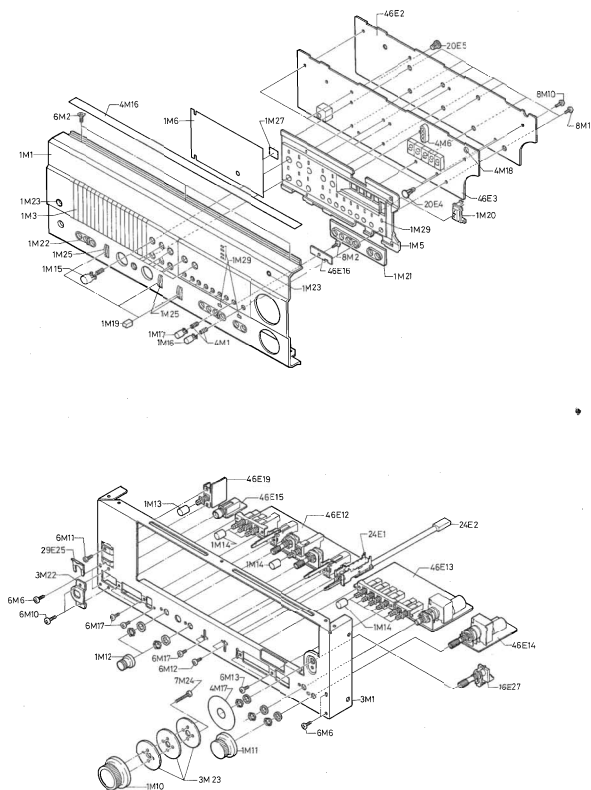
(For B1 Version)



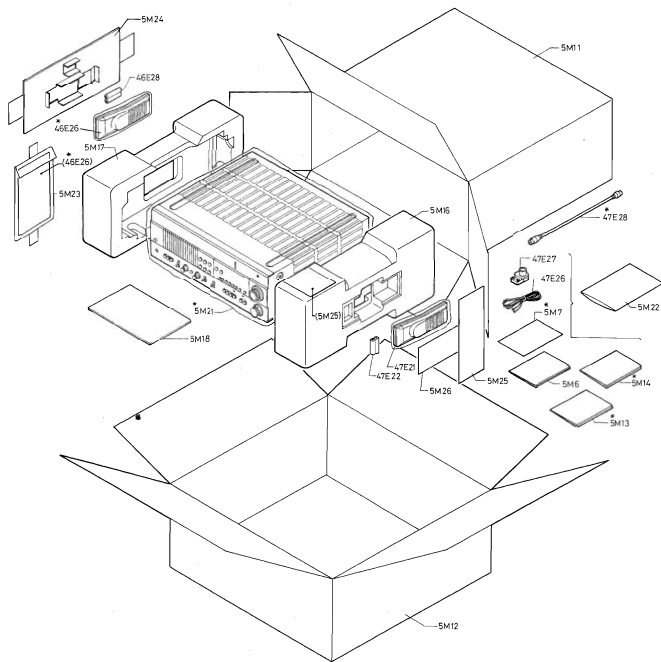
(For B, C, C1 Version)



Front Panel



Packing



PARTS LIST

● Parts marked with * vary according to destinations. For details, refer to the classify parts list.

TUNER PCB ASS'Y

REF. NO.	Q'TY	PART NO.	DESCRIPTION
P.C.B. BOARD			
401	1	TIM-706A	PRINTED CIRCUIT BOARD
SERIAL CONNECTORS			
0001-001	4	1518FPM	DIODE
0005-008	25	155176	DIODE
061-063			
101-141			
145-147			
149-150			
153-150			
160			
* 155			
0001-002	2	25C930P-D+E	TRANSISTOR
0003-008	6	25C1815-Y+GR	TRANSISTOR
0009	1	25A1015-Y+GR	TRANSISTOR
0010	1	25C1815-Y+GR	TRANSISTOR
0011	1	25A1015-Y+GR	TRANSISTOR
0012	1	25C1815-Y+GR	TRANSISTOR
0013	1	25K381-D	TRANSISTOR
0014-062	2	25K381-D+E	TRANSISTOR
0065	1	25K30ATM-GR	TRANSISTOR
0101-102	2	25C612	TRANSISTOR
0103-104	3	25C1815-Y+GR	TRANSISTOR
0141			
0142	1	25A1015-Y+GR	TRANSISTOR
0143	1	25A1282A-E+FG	TRANSISTOR
0144	1	25C1815-Y+GR	TRANSISTOR
0145	1	25A1282A-E+FG	TRANSISTOR
0146-152	7	25C1815-Y+GR	TRANSISTOR
0153	1	25A1015-Y+GR	TRANSISTOR
0154-159	6	25C1815-Y+GR	TRANSISTOR
0160	1	25A1015-Y+GR	TRANSISTOR
0161	1	25C1815-Y+GR	TRANSISTOR
IC001	1	LA1222	IC
IC002	1	LA1235	IC
IC003	1	LA3450	IC
IC061	1	LA3491	IC
IC062-063	2	UPC4570HA	IC
IC101	1	LA1245	IC
IC101	1	NJMS585	IC
VD101-102	2	KV1226-V	DIODE
CAPACITORS			
C001	1	EP055JCH240J	CERAMIC CAPACITOR
C002	1	EP0510J2K	CERAMIC CAPACITOR
C003	1	TP050F232	CERAMIC CAPACITOR
C004-005	2	UP050B102K	CERAMIC CAPACITOR
C006	2	TP050F232	CERAMIC CAPACITOR
C007	1	LL-50TWR22M	LOW LEAK. ELECTROLYTIC CAP.
C008	1	EC0B1H03J2	METALIZED FILM CAPACITOR
C009	1	TP125X100M	CERAMIC CAPACITOR
C010-016	7	TP050F232	CERAMIC CAPACITOR
C017	1	NS-50TW1R0M	ELECTROLYTIC CAPACITOR
C018	1	NS-50TW1R0M	ELECTROLYTIC CAPACITOR
C019	1	NS-50TW1R0M	ELECTROLYTIC CAPACITOR
C020	1	NS-50TW47M	ELECTROLYTIC CAPACITOR
C021	1	NS-10T101M	ELECTROLYTIC CAPACITOR
C022	1	NS-10C051R02J	CERAMIC CAPACITOR
C023	1	TP050F232	CERAMIC CAPACITOR
C024	1	NS-16T422M	ELECTROLYTIC CAPACITOR
C025-026	2	TP050F232	CERAMIC CAPACITOR
C027	1	NS-50TW1R0M	ELECTROLYTIC CAPACITOR
C028	1	NS-50TWR22M	ELECTROLYTIC CAPACITOR
C029-030	2	TP050F232	CERAMIC CAPACITOR
C031	1	NS-50TW1R0M	ELECTROLYTIC CAPACITOR
C032	1	UP050S147K	CERAMIC CAPACITOR
C033	1	NS-50TWR22M	ELECTROLYTIC CAPACITOR
C034	1	UP050B101K	CERAMIC CAPACITOR
C035	1	MY-50V047J	MYLAR CAPACITOR
C036	1	NS-16T410M	ELECTROLYTIC CAPACITOR
C037	1	NS-16T470M	ELECTROLYTIC CAPACITOR
C038	1	UP050B351K	CERAMIC CAPACITOR
C039	1	TP050F232	CERAMIC CAPACITOR
C061	1	NS-16T101M	ELECTROLYTIC CAPACITOR
C062	1	LL-16T1010M	LOW LEAK. ELECTROLYTIC CAP.
C063-064	2	TP050F232	CERAMIC CAPACITOR
C065	1	NS-50TW1R0M	ELECTROLYTIC CAPACITOR
C066	1	LL-25T447M	LOW LEAK. ELECTROLYTIC CAP.
C067	1	NS-50TW1R0M	ELECTROLYTIC CAPACITOR
C068	1	LL-50TWR22M	LOW LEAK. ELECTROLYTIC CAP.
C069	1	NS-16T422M	ELECTROLYTIC CAPACITOR
C070	1	NS-16T101M	ELECTROLYTIC CAPACITOR
C071-072	2	UP050S221K	CERAMIC CAPACITOR
C073-074	2	NS-25T4470M	ELECTROLYTIC CAPACITOR
C075-076	2	MY-50V035J	MYLAR CAPACITOR
C077-078	2	NS-50TWR22M	ELECTROLYTIC CAPACITOR
C079-080	2	MY-50V0182J	MYLAR CAPACITOR
C081-084	4	MY-50V0152J	MYLAR CAPACITOR
C085-086	2	MY-50V022J	MYLAR CAPACITOR
C087-088	2	NS-50TWR22M	ELECTROLYTIC CAPACITOR
C089	1	MY-50V047J	MYLAR CAPACITOR
C090-091	2	NS-16T101M	ELECTROLYTIC CAPACITOR
* C092	1	UP050S221K	CERAMIC CAPACITOR
C101	1	EC0B1H03J2	METALIZED FILM CAPACITOR
C102	1	EC0B1H03J2	METALIZED FILM CAPACITOR
C103	1	EC0B1H04J2	METALIZED FILM CAPACITOR
C104	1	UP050S150J	CERAMIC CAPACITOR
C105	1	TP050F232	CERAMIC CAPACITOR
C106	1	UP050B102K	CERAMIC CAPACITOR
C107	1	UP050S1287K	CERAMIC CAPACITOR

REF. NO.	Q'TY	PART NO.	DESCRIPTION
C108	1	UP050S180M	CERAMIC CAPACITOR
C109	1	UP050B102K	CERAMIC CAPACITOR
C110-112	3	TP050F232	CERAMIC CAPACITOR
C113	1	NS-16T100M	ELECTROLYTIC CAPACITOR
C114	1	NS-16T101M	ELECTROLYTIC CAPACITOR
C115	1	NS-16T101M	ELECTROLYTIC CAPACITOR
C116	1	UP050B102K	CERAMIC CAPACITOR
C117	1	EP050123M	CERAMIC CAPACITOR
C118	1	NS-50TWR47M	ELECTROLYTIC CAPACITOR
C119	1	TP050F232	CERAMIC CAPACITOR
C120-121	2	NS-16T1W0M	ELECTROLYTIC CAPACITOR
C122	1	LL-50TWR22M	LOW LEAK. ELECTROLYTIC CAP.
C123	1	MY-50V0485J	MYLAR CAPACITOR
C124	1	NS-50TWR0M	ELECTROLYTIC CAPACITOR
C125	1	LL-50TWR47M	LOW LEAK. ELECTROLYTIC CAP.
C126	1	EC0B1H03J2	METALIZED FILM CAPACITOR
C127	1	ST-50V0531J	STYRENE CAPACITOR
C141-142	2	NS-50TWR0M	ELECTROLYTIC CAPACITOR
C143	1	NS-16T101M	ELECTROLYTIC CAPACITOR
C144	1	NS-16T470M	ELECTROLYTIC CAPACITOR
C145	1	NS-16T100M	ELECTROLYTIC CAPACITOR
C146	1	NS-25TWR47M	ELECTROLYTIC CAPACITOR
C147-149	3	NS-16T100M	ELECTROLYTIC CAPACITOR
TC101-102	2	CTC-6U-010	TRIMMER CAPACITOR
RESISTORS			
R001	1	KA165T102J	CARBON RESISTOR
R002	1	KA165T102J	CARBON RESISTOR
R003	1	KA165T222J	CARBON RESISTOR
R004	1	KA165T271J	CARBON RESISTOR
R005	1	KA165T681J	CARBON RESISTOR
R006	1	KA165T71J	CARBON RESISTOR
R007	1	KA165T102J	CARBON RESISTOR
R008	1	KA165T272J	CARBON RESISTOR
R009	1	KA165T63J	CARBON RESISTOR
R010	1	KA165T104J	CARBON RESISTOR
R011	1	KA165T623J	CARBON RESISTOR
R012	1	KA165T393J	CARBON RESISTOR
R013	1	KA165T13J	CARBON RESISTOR
* R014	1	KA165T124J	CARBON RESISTOR
R015	1	KA165T31J	CARBON RESISTOR
R016-017	2	KA165T101J	CARBON RESISTOR
R019-019	2	KA165T31J	CARBON RESISTOR
R020	1	KA165T152J	CARBON RESISTOR
R021	1	KA165T104J	CARBON RESISTOR
R022	1	KA165T335J	CARBON RESISTOR
R023	1	KA165T222J	CARBON RESISTOR
R024	1	KA165T102J	CARBON RESISTOR
R025-026	2	KA165T103J	CARBON RESISTOR
R027	1	KA165T222J	CARBON RESISTOR
R028	1	KA165T203J	CARBON RESISTOR
R029	1	KA165T272J	CARBON RESISTOR
R030	1	KA165T103J	CARBON RESISTOR
R031	1	KA165T202J	CARBON RESISTOR
R032	1	KA165T302J	CARBON RESISTOR
R033	1	KA165T392J	CARBON RESISTOR
R037	1	KA165T253J	CARBON RESISTOR
R038	1	KA165T103J	CARBON RESISTOR
R039	1	KA165T113J	CARBON RESISTOR
R040	1	KA165T392J	CARBON RESISTOR
R041	1	KA165T302J	CARBON RESISTOR
R042	1	KA165T203J	CARBON RESISTOR
R043-044	2	KA165T103J	CARBON RESISTOR
R045	1	KA165T222J	CARBON RESISTOR
* R046	1	KA165T222J	CARBON RESISTOR
R047-048	2	KA165T103J	CARBON RESISTOR
R049	1	KA165T103J	CARBON RESISTOR
R050	1	KA165T562J	CARBON RESISTOR
R051	1	KA165T472J	CARBON RESISTOR
R052-060	9	KA165T202J-LP	CARBON RESISTOR
* R061	1	KA165T223J	CARBON RESISTOR
R062	1	KA165T683J	CARBON RESISTOR
R063	1	KA165T272J	CARBON RESISTOR
R064	1	KA165T685J	CARBON RESISTOR
R065	1	KA165T102J	CARBON RESISTOR
R066	1	KA165T164J	CARBON RESISTOR
R067-068	2	KA165T273J	CARBON RESISTOR
R069-070	2	KA165T272J	CARBON RESISTOR
R071-072	2	KA165T472J	CARBON RESISTOR
R073-074	2	KA165T361J	CARBON RESISTOR
R075-076	2	KA165T391J	CARBON RESISTOR
R077-078	2	KA165T272J	CARBON RESISTOR
R079-080	2	KA165T113J	CARBON RESISTOR
R081-082	2	KA165T225J	CARBON RESISTOR
R083-084	2	KA165T473J	CARBON RESISTOR
R085-086	2	KA165T272J	CARBON RESISTOR
R087-088	2	KA165T393J	CARBON RESISTOR
R089-090	2	KA165T392J	CARBON RESISTOR
R091-092	2	KA165T562J	CARBON RESISTOR
R093-094	2	KA165T104J	CARBON RESISTOR
R095-096	2	KA165T225J	CARBON RESISTOR
R097	1	KA165T102J	CARBON RESISTOR
R101	1	KA50K7682J	CARBON RESISTOR
R102-103	2	KA165T102J	CARBON RESISTOR
R104	1	KA165T473J	CARBON RESISTOR
R105	1	KA165T272J	CARBON RESISTOR
R106	1	KA165T473J	CARBON RESISTOR
R107	1	KA165T393J	CARBON RESISTOR
R108	1	KA165T102J	CARBON RESISTOR
R109-110	2	KA165T103J	CARBON RESISTOR

REF. NO.	QTY	PART NO.	DESCRIPTION
R111	1	KA165T802J	CARBON RESISTOR
R112	1	KA165T471J	CARBON RESISTOR
R113	1	KA165T332J	CARBON RESISTOR
R114	1	KA165T152J	CARBON RESISTOR
R115	1	KA165T221J	CARBON RESISTOR
R116	1	KA165T222J	CARBON RESISTOR
R117-118	2	KA165T105J	CARBON RESISTOR
R119	1	KA165T183J	CARBON RESISTOR
R120	1	KA165T083J	CARBON RESISTOR
R121	1	KA165T223J	CARBON RESISTOR
R122	1	KA165T212J	CARBON RESISTOR
R123-124	2	KA165T102J	CARBON RESISTOR
R125	1	KA165T332J	CARBON RESISTOR
R126	1	KA165T823J	CARBON RESISTOR
R127	1	KA255T220J-LP	CARBON RESISTOR
R141	1	KA165T103J	CARBON RESISTOR
R142	1	KA165T273J	CARBON RESISTOR
R143	1	KA165T275J	CARBON RESISTOR
R144	1	KA165T103J	CARBON RESISTOR
R145	1	KA165T183J	CARBON RESISTOR
R146	1	KA165T223J	CARBON RESISTOR
R147	1	KA165T333J	CARBON RESISTOR
R148	1	KA165T472J	CARBON RESISTOR
R149	1	KA165T104J	CARBON RESISTOR
R150-151	2	KA165T103J	CARBON RESISTOR
R152	1	KA165T104J	CARBON RESISTOR
R153	1	KA165T104J	CARBON RESISTOR
R154	1	KA165T104J	CARBON RESISTOR
R155	1	KA165T333J	CARBON RESISTOR
R156	1	KA165T103J	CARBON RESISTOR
R157	1	KA165T104J	CARBON RESISTOR
R159	1	KA165T272J	CARBON RESISTOR
R159	1	KA165T103J	CARBON RESISTOR
R160	1	KA165T104J	CARBON RESISTOR
R161	1	KA165T272J	CARBON RESISTOR
R162	1	KA165T103J	CARBON RESISTOR
R163	1	KA165T223J	CARBON RESISTOR
R164	1	KA165T334J	CARBON RESISTOR
R165	1	KA165T220J	CARBON RESISTOR
R166	1	KA165T103J	CARBON RESISTOR
R167-169	3	KA165T473J	CARBON RESISTOR
R170	1	KA165T272J	CARBON RESISTOR
R171	1	KA165T473J	CARBON RESISTOR
R172	1	KA165T103J	CARBON RESISTOR
R173	1	KA165T473J	CARBON RESISTOR
R174	1	KA165T220J	CARBON RESISTOR
R175	1	KA165T224J	CARBON RESISTOR
R176	1	KA165T222J	CARBON RESISTOR
R177	1	KA165T103J	CARBON RESISTOR
R178	1	KA165T223J	CARBON RESISTOR
R179-180	2	KA165T473J	CARBON RESISTOR
R181	1	KA165T104J	CARBON RESISTOR
R182-183	2	KA165T473J	CARBON RESISTOR
R184	1	KA165T103J	CARBON RESISTOR
R185-186	2	KA165T473J	CARBON RESISTOR
R187	1	KA165T104J	CARBON RESISTOR
R188-189	2	KA165T223J	CARBON RESISTOR
R190	1	KA165T823J	CARBON RESISTOR
R191-192	2	KA165T102J	CARBON RESISTOR
R193	1	KA165T473J	CARBON RESISTOR
R194	1	KA165T104J	CARBON RESISTOR
R195	1	KA165T474J	CARBON RESISTOR
R196	1	KA165T563J	CARBON RESISTOR
SVR001	1	SVR-06T38502	SEMI-VARIABLE
SVR061	1	SVR-06T38203CM	SEMI-VARIABLE RESISTOR
SVR062	1	SVR-06T38205	SEMI-VARIABLE
SVR101-102	2	SVR-06T38505	SEMI-VARIABLE
SVR141	1	SVR-06T38205	SEMI-VARIABLE
SVR142	1	SVR-06T38105	SEMI-VARIABLE
SVR143	1	SVR-06T38502	SEMI-VARIABLE
COILS			
L001	1	LHL06562J	INDUCTOR
L102	1	LAL03121K	INDUCTOR
T001	1	141037	FM IFT
T002	1	141058	FM DET. COIL
T003	1	143016	FILTER COIL
T004-062	1	14W03140	FILTER BLOCK
T101	1	135025	MW OSC. COIL
T102	1	140058	MW IFT
T103	1	140057	MW IFT
T104	1	143017	FILTER COIL
T105	1	143018	FILTER COIL
SWITCHES			
SW061	1	SW-5220157	SLIDE SWITCH
MISCELLANEOUS			
# F001-003	3	5FE10.7MLK-A	10-7MHZ FILTER
F081	1	KBR-450AHAB	CERAMIC FILTER 457KHZ
F101	1	XBR-450AHAB	CERAMIC FILTER
F102	1	SFP450H	CERAMIC FILTER
1E 2	1	1K1698	6ND LUG
1E 5	2	S9851692	GND LUG
1W29	1	0075260005-J-J	SOLDER PLATED WIRE
1W30	1	0075260118-J-J	SOLDER PLATED WIRE
7E12	1	LL-S04P5212-EF	CONNECTOR
9E19	1	MC06-631	MICRO SOCKET ASSY
9E20	1	MC09-624	MICRO SOCKET ASSY

REF. NO.	QTY	PART NO.	DESCRIPTION
9E21	1	MK10-625	MICRO SOCKET ASSY
AT101	1	PT-C02P01	TERMINAL 2P
* F001	1	F019A	FRONT END
MP350	1	B10B-PH-K	CONNECTOR
TP002	1	1MSA-106B-02A	MINI TERMINAL PLATE
TP101	1	1MSA-106B-03A	MINI TERMINAL PLATE
TP102-103	3	MK-10160	TERMINAL PIN
141			
11E22	55	5E-105	JUMP WIRE
11E23	44	4E-105	JUMP WIRE

PLL CONTROL PCB ASSY

REF. NO.	QTY	PART NO.	DESCRIPTION
P.C. BOARD			
46E 2	1	PLL-707A	PRINTED CIRCUIT BOARD
SEMI-CONDUCTORS			
D146-201	23	155176	DIODE
211-213			
221-227			
228			
Q201	1	25C1815-Y+GR	TRANSISTOR
Q202	1	25K212-E	TRANSISTOR
Q203-205	3	25C1815-Y+GR	TRANSISTOR
Q206	1	25A1015-Y+GR	TRANSISTOR
Q207	1	25C3242A-E+f+G	TRANSISTOR
Q208	1	25C3243-D+E	TRANSISTOR
Q209	1	25K311-D+E	TRANSISTOR
Q210-214	8	25C1815-Y+GR	TRANSISTOR
217-218			
223			
IC201	1	TC91478P	IC
IC202	1	TD8104P	IC
IC204	1	NJM4585	IC
IC206	1	LC4081B	IC
IC211	1	LC4089UB	IC
P0007-010	3	155176	DIODE
913			
P0008-020	2	25C1815-Y+GR	TRANSISTOR
ZD01	1	R039E-B1	ZENER DIODE
PC002	1	LC74HC164	IC
PZ003	1	ZD05-0A5	ZENER DIODE
CAPACITORS			
C201	1	UP050CH2R2K	CERAMIC CAPACITOR
C202	1	HE505JCH300J	CERAMIC CAPACITOR
C203	1	TP050F232	CERAMIC CAPACITOR
C204	1	NS-10T101M	ELECTROLYTIC CAPACITOR
C205	1	LL-6831W222MKF	LOW LEAK. ELECTROLYTIC CAP.
C206	1	NS-10T4W70H	ELECTROLYTIC CAPACITOR
C207	1	NS-50TWR47M	ELECTROLYTIC CAPACITOR
C208	1	NS-10T101M	ELECTROLYTIC CAPACITOR
C209	1	NS-10T4W70H	ELECTROLYTIC CAPACITOR
C210-212	3	EP050Y103N	CERAMIC CAPACITOR
C215	1	NS-50T101M	ELECTROLYTIC CAPACITOR
C216	1	LL-50TWR20H	LOW LEAK. ELECTROLYTIC CAP.
C217	1	LL-50TWR33M	LOW LEAK. ELECTROLYTIC CAP.
C218	1	NS-50T4W70H	ELECTROLYTIC CAPACITOR
C219-220	2	NS-50TWR10H	ELECTROLYTIC CAPACITOR
C221	1	NS-10T4W70H	ELECTROLYTIC CAPACITOR
C222-225	2	NS-50TWR47M	ELECTROLYTIC CAPACITOR
C230	1	NS-10T4W70H	ELECTROLYTIC CAPACITOR
C231-232	2	UP050B102N	CERAMIC CAPACITOR
C235	1	EP050Y103N	CERAMIC CAPACITOR
C237	1	NS-50T4W70H	ELECTROLYTIC CAPACITOR
C238	1	TP050F232	CERAMIC CAPACITOR
PC008	1	NS-10T101M	ELECTROLYTIC CAPACITOR
PC022	1	NS-16T101M	ELECTROLYTIC CAPACITOR
TC201	1	CTC-6H-050	TRIMMER CAPACITOR
RESISTORS			
R201	1	KA165T153J	CARBON RESISTOR
R202	1	KA165T471J	CARBON RESISTOR
R203	1	KA165T223J	CARBON RESISTOR
R204	1	KA165T473J	CARBON RESISTOR
R205	1	KA165T472J	CARBON RESISTOR
R206-207	2	KA165T473J	CARBON RESISTOR
R208-209	2	KA165T104J	CARBON RESISTOR
R210	1	KA165T223J	CARBON RESISTOR
R211-212	2	KA165T103J	CARBON RESISTOR
R213	1	KA165T104J	CARBON RESISTOR
R214	1	KA165T182J	CARBON RESISTOR
R215	1	KA165T470J	CARBON RESISTOR
R216	1	KA165T333J	CARBON RESISTOR

REF. NO.	Q'TY	PART NO.	DESCRIPTION
Q217	1	KAI65731J	CARBON RESISTOR
Q218	1	KAI65103J	CARBON RESISTOR
Q219	1	KAI65104J	CARBON RESISTOR
Q220+222	3	KAI65103J	CARBON RESISTOR
Q223	1	KAI65123J	CARBON RESISTOR
Q224	1	KAI65702J	CARBON RESISTOR
Q225	1	KAI65103J	CARBON RESISTOR
Q226	1	KAI65147J	CARBON RESISTOR
Q227	1	KAI65103J	CARBON RESISTOR
Q228	1	KAI65103J	CARBON RESISTOR
Q229+230	2	KAI65103J	CARBON RESISTOR
Q231	1	KAI65147J	CARBON RESISTOR
Q232	1	KAI65103J	CARBON RESISTOR
Q233	1	KAI65103J	CARBON RESISTOR
Q234	1	KAI65105J	CARBON RESISTOR
Q235	1	KAI65150J	CARBON RESISTOR
Q236+238	2	KAI65103J	CARBON RESISTOR
Q239	1	KAI65104J	CARBON RESISTOR
Q244+252	9	KAI65720J	CARBON RESISTOR
Q251+254	2	KAI65103J	CARBON RESISTOR
Q255	1	KAI65103J	CARBON RESISTOR
Q268	1	KAI65147J	CARBON RESISTOR
Q269	1	KAI65103J	CARBON RESISTOR
Q270	1	KAI65104J	CARBON RESISTOR
Q271	1	KAI65122J	CARBON RESISTOR
Q272	1	KAI65110J	CARBON RESISTOR
Q273	1	KAI65102J	CARBON RESISTOR
Q274	1	KAI65104J	CARBON RESISTOR
Q275	1	KAI65123J	CARBON RESISTOR
Q276+277	2	KAI65104J	CARBON RESISTOR
Q283	1	KAI65132J	CARBON RESISTOR
Q317	1	KAI65102J	CARBON RESISTOR
Q318	1	KAI65720J	CARBON RESISTOR
PR008+009	2	KAI65470J	CARBON RESISTOR
PR041+042	2	KAI65103J	CARBON RESISTOR
PR047	1	KAI65104J	CARBON RESISTOR
PR057	1	KAI65147J	CARBON RESISTOR
PR059	1	KAI65103J	CARBON RESISTOR
PR060+063	4	KAI65720J	CARBON RESISTOR
PR064+066	3	KAI65103J	CARBON RESISTOR
PR067+070	4	KAI65720J	CARBON RESISTOR
SVR201	1	RH0614C-103	SEMI-VARIABLE RESISTOR
SWITCHES			
SW210	1	555212A	SLIDE SWITCH
MISCELLANEOUS			
X201	1	HC18J7J-200MHZ	QUARTZ OSCILLATOR UNIT
1M11	3	2HJ526806-J-J	5-LEAD, FLAT CABLE
1M13	3	2HJ526806-J-J	6-LEAD, FLAT CABLE
1M15	3	2HJ526806-J-J	7-LEAD, FLAT CABLE
1M17	1	2HJ526806-J-J	8-LEAD, FLAT CABLE
MP100	1	B08-EH-A	CONNECTOR
MP110	1	B10B-PH-K	CONNECTOR
MP120	1	B08-PH-K	CONNECTOR
MP210	1	B08-EH-A	CONNECTOR
MP400	1	B2B-PH-K	CONNECTOR
MP410	1	B7B-PH-K	CONNECTOR
MP420	1	B08-PH-K	CONNECTOR
MP510	1	B08-PH-K	CONNECTOR
TP201	1	171826-3	MICRO PLUG
20E 1	89	5E-T05	JUMP WIRE
20E 2	30	4E-T05	JUMP WIRE
20E 8	2	1P5-103A-3	JUMP WIRE

U - COM INDICATORS PCB ASSY

REF. NO.	Q'TY	PART NO.	DESCRIPTION
P.C. BOARD			
46E 3	1	DPY-707A	PRINTED CIRCUIT BOARD
SEMICONDUCTORS			
Q222	1	155176	DIODE
Q215+216+219+222	6	25C1815-Y+GR	TRANSISTOR
IC203	1	TD6301AP	IC
IC205	1	L81413N	IC
LD201	1	SLR-34VC3F	LED
LD202+209	8	SLR-34MC3F-N+P	LED
LD210+211	5	SLR2476H	LED
LD215	1	SLP476B	LED
LD216	1	TL6205	LED
LD217	1	SLP476B	LED
LD219+223	5	LN51404	LED
P0081+003+005+006+008+009+011+012+014	10	155176	DIODE
P001+006	2	25A1015-Y+GR	TRANSISTOR

REF. NO.	Q'TY	PART NO.	DESCRIPTION
P0007+011-019	10	25C1815-Y+GR	TRANSISTOR
P0021	1	25A1015-Y+GR	TRANSISTOR
P0022+023	2	25C1815-Y+GR	TRANSISTOR
1Z010	1	Z050-066	ZENER DIODE, 1/2W, 6+5V
PI0001	1	UPD7507CU-240	IC
PLD001+007	7	SLR-34MC3F-N+P	LED
PLD008	1	SLR-34VC3F-N+M	LED
PLD009	1	SLR-34MC3F-N+P	LED
PLD010	1	SLR-34VC3F	LED
PLD011+012	2	SLR-34VC3F-N+M	LED
PLD013	1	SLP140B	LED
PZ0002	1	Z050-055	ZENER DIODE1/2W+5.5V
CAPACITORS			
C233+224	2	57-16TW100M	ELECTROLYTIC CAPACITOR
C235	1	1P050F2232	CERAMIC CAPACITOR
C234	1	1P050B102K	CERAMIC CAPACITOR
C236	1	1P050F2332	CERAMIC CAPACITOR
PC001	1	37-50TW92M	ELECTROLYTIC CAPACITOR
PC002	1	EECF800H32	SOLO CAPACITOR
PC003	1	57-107W101M	ELECTROLYTIC CAPACITOR
PC004	1	1P050F2232	CERAMIC CAPACITOR
PC005	1	HE95JC4900G	CERAMIC CAPACITOR
PC007	1	57-16TW470M	ELECTROLYTIC CAPACITOR
PC009	1	1P050F2232	CERAMIC CAPACITOR
PC010+013	4	UP010R471K	CERAMIC CAPACITOR
PC015+021	7	1P050F2232	CERAMIC CAPACITOR
PC023	1	37-50TW100M	ELECTROLYTIC CAPACITOR
PC024	1	57-16TW220M	ELECTROLYTIC CAPACITOR
PC025+026	2	1P050F2232	CERAMIC CAPACITOR
RESISTORS			
R240	1	KAI657103J	CARBON RESISTOR
R241	1	KAI657101J	CARBON RESISTOR
R242	1	KAI657011J	CARBON RESISTOR
R243	1	KAI657472J	CARBON RESISTOR
R245	1	KAI657241J	CARBON RESISTOR
R247	1	KAI657223J	CARBON RESISTOR
R279	1	KAI657103J	CARBON RESISTOR
R280+281	2	KAI657223J	CARBON RESISTOR
R282	1	KAI657103J	CARBON RESISTOR
R284+291	8	KAI657122J	CARBON RESISTOR
R292	1	KAI657103J	CARBON RESISTOR
R293	1	KAI657103J	CARBON RESISTOR
R294+316	23	KAI657102J	CARBON RESISTOR
PR001+007	7	KAI65470J	CARBON RESISTOR
PR010+014	5	KAI65104J	CARBON RESISTOR
PR015	1	KAI65103J	CARBON RESISTOR
PR022+023	2	KAI65720J	CARBON RESISTOR
PR024	1	KAI657103J	CARBON RESISTOR
PR025+029	5	KAI657221J	CARBON RESISTOR
PR030	1	KAI65103J	CARBON RESISTOR
PR031+038	8	KAI65153J	CARBON RESISTOR
PR040	1	KAI657104J	CARBON RESISTOR
PR043	1	KAI657103J	CARBON RESISTOR
PR046	1	KAI65470J	CARBON RESISTOR
PR048	1	HF257823F	METAL FILM RESISTOR
PR049	1	KAI657151J	CARBON RESISTOR
PR050	1	KAI65475J	CARBON RESISTOR
PR051	1	KAI65472J	CARBON RESISTOR
PR055	1	KAI65727J	CARBON RESISTOR
PR054	1	KAI657103J	CARBON RESISTOR
PR055	1	KAI657104J	CARBON RESISTOR
PR056	1	KAI657153J	CARBON RESISTOR
PR058	1	KAI65721J	CARBON RESISTOR
PR071	1	KAI657104J	CARBON RESISTOR
PR072	1	KAI657153J	CARBON RESISTOR
PR073	1	KAI657104J	CARBON RESISTOR
PR074+075	2	KAI65473J	CARBON RESISTOR
PR076	1	KAI657152J	CARBON RESISTOR
PR077+078	2	KAI65760J	CARBON RESISTOR
PR081	1	KAI657103J	CARBON RESISTOR
COILS			
PL001	1	LAL03102K	INDUCTOR
SWITCHES			
SMW01+209	9	5KHPK	TACT SWITCH
PSM002+009	8	5KHPK	TACT SWITCH
MISCELLANEOUS			
4W 7	2	N45090A	SHIELD CUSHION
4W 8	3	N44997	SHIELD CUSHION
4W 9	21	N42557-4	WASHER
4W10	1	N42557-5	WASHER
4W11	1	N42557-7	WASHER
4W12	2	N42557-9	WASHER
4W13	2	N42557-4	WASHER
4W14	1	N44127-1	SHIELD PAPER
4W20	1	N45223	FC CUSHION
4W29	1	N45206	FC CUSHION
15E15	74	5E-T05	JUMP WIRE
15E16	20	4E-T05	JUMP WIRE
15E18	1	R-020-20	CABLE ASSY
PRM01	1	BK1367	REMOTE SIGNAL RECEIVING UNIT

MAIN AMP L CH PCB ASS'Y

REF. NO.	Q'TY	PART NO.	DESCRIPTION
P.C. BOARD			
44E 6	1	ML-708	PRINTED CIRCUIT BOARD
SEMICONDUCTORS			
D601+603, 605+607, 609+611, 613+615, 617+619, 621+623, 625+627	14	151588	DIODE
D629	1	155144	DIODE
D631+633	2	151588	DIODE
D635	1	155144	DIODE
D637+639	2	151588	DIODE
D641+643	2	0KX20	DIODE
D645+647	2	1N4003	DIODE
Q601	1	25A1335-GR	TRANSISTOR
Q603	1	25C3378-GR	TRANSISTOR
Q605+607	2	25A1335-GR	TRANSISTOR
Q609+611, 613+615, 617+619	6	25C3378-GR	TRANSISTOR
Q621	1	25A1370-E+F	TRANSISTOR
Q623	1	25A1335-GR	TRANSISTOR
Q625+627, 629	3	25C3667-E+F	TRANSISTOR
Q631	1	25A1370-E+F	TRANSISTOR
Q633	1	25C1953-R+5	TRANSISTOR
Q635	1	25C3378-GR	TRANSISTOR
Q637	1	25C3907-R+0	TRANSISTOR
Q639	1	25A1516-R+0	TRANSISTOR
Q641+643	2	25A1302-R+0	TRANSISTOR
Q645	1	25D600K-E+F	TRANSISTOR
Q647	1	25C3281-R+0	TRANSISTOR
Q649	1	25A1335-GR	TRANSISTOR
Q651+653	2	25C3281-R+0	TRANSISTOR
Q655	1	25B631K-E+F	TRANSISTOR
Q657	1	25A1302-R+0	TRANSISTOR
Z0601+603	2	Z050-122	ZENER DIODE, 1/2W, 12.2V
Z0605+607	2	Z050-066	ZENER DIODE, 1/2W, 6.6V
CAPACITORS			
C601+603	2	ECGV1H084JZ	METALLIZED FILM CAPACITOR
C605	1	MF-501050J	MYLAR CAPACITOR
C607+609	2	MS-25T220M	ELECTROLYTIC CAPACITOR
C611	1	HE115JL801K	CERAMIC CAPACITOR
C613	1	MS-17H080M	ELECTROLYTIC CAPACITOR
C615	1	HE005JL391K	CERAMIC CAPACITOR
C617	1	MS-10T221M	ELECTROLYTIC CAPACITOR
C619	1	MS-16T4101M	ELECTROLYTIC CAPACITOR
* C621	1	MS100T400M	ELECTROLYTIC CAPACITOR
C623	1	HE005JL330K	CERAMIC CAPACITOR
C625	1	HE005JSH220K	CERAMIC CAPACITOR
C627	1	MS-17H100M	ELECTROLYTIC CAPACITOR
C629	1	ECGV1H04JZ	METALLIZED FILM CAPACITOR
* C635	2	HE405JY010ZM	CERAMIC CAPACITOR
C637	1	HE005JL471K	CERAMIC CAPACITOR
* C639	1	ECGV1H04JZ	METALLIZED FILM CAPACITOR
C641	1	HE005JL471K	CERAMIC CAPACITOR
C643	1	HE005JL151K	CERAMIC CAPACITOR
C645	1	HE005JL101K	CERAMIC CAPACITOR
C647	1	HE005JL331K	CERAMIC CAPACITOR
C649	1	MY10DVS104K-KF	MYLAR CAPACITOR
C651	1	HE005JL151K	CERAMIC CAPACITOR
C653	1	HE005JL257K	CERAMIC CAPACITOR
C655	1	HE005JL331K	CERAMIC CAPACITOR
C657	1	MY10DVS104K-KF	MYLAR CAPACITOR
C659	1	HE005JL257K	CERAMIC CAPACITOR
C663+665	2	MS-50T220M	ELECTROLYTIC CAPACITOR
C667	1	ECGV1H04JZ	METALLIZED FILM CAPACITOR
RESISTORS			
R601	1	KA255101J	CARBON RESISTOR
R603	1	KA255101J	CARBON RESISTOR
R605	1	KA255101J	CARBON RESISTOR
R607+609	2	KA255122J	CARBON RESISTOR
R611	1	KA255122J	CARBON RESISTOR
R613	1	SA-2M102J-LP	METAL OXIDE RESISTOR
R615	1	KA255152J	CARBON RESISTOR
R617+619, 621	3	KA255102J	CARBON RESISTOR
R623	1	KA255152J	CARBON RESISTOR
R625+627	2	KA255127J	CARBON RESISTOR
R629+631	2	KA255147J	CARBON RESISTOR
R633	1	FR255330J-LP	FLAME PROOF RESISTOR
R635	1	KA255104J	CARBON RESISTOR
R637+639	2	KA255123J	CARBON RESISTOR
R641	1	KA2551R2J	CARBON RESISTOR
R643	1	KA255103J	CARBON RESISTOR
R645	1	KA255139J	CARBON RESISTOR
R647+649	2	MF2552N1F	METAL OXIDE RESISTOR
R651+653	2	KA255102J	CARBON RESISTOR
R655	1	KA255101J	CARBON RESISTOR
R657	1	KA255102J	CARBON RESISTOR
R659+661	2	KA255121J	CARBON RESISTOR
R663	1	KA255102J	CARBON RESISTOR
R665	1	KA2551361J	CARBON RESISTOR
R667	1	KA255102J	CARBON RESISTOR
R669	1	SA-2M112J-LP	METAL OXIDE RESISTOR
R671+673	2	KA255147J	CARBON RESISTOR

REF. NO.	Q'TY	PART NO.	DESCRIPTION
R675	1	KA255123J	CARBON RESISTOR
R677	1	FR255131J-LP	FLAME PROOF RESISTOR
R679	1	FR2551470J-LP	FLAME PROOF RESISTOR
R681	1	FR2551680J-LP	FLAME PROOF RESISTOR
R683	1	KA255103J	CARBON RESISTOR
R685	1	KA255133J	CARBON RESISTOR
R687+689	2	FR255193J	CARBON RESISTOR
* R691	1	FR255156J	FLAME PROOF RESISTOR
R693	1	FR255151J-LP	FLAME PROOF RESISTOR
R695	1	FR2551680J-LP	FLAME PROOF RESISTOR
R697+699	2	FR255127J	FLAME PROOF RESISTOR
R701	1	KA255156J	CARBON RESISTOR
R703	1	FR2551470J-LP	FLAME PROOF RESISTOR
R705,707	2	FR2551471J-LP	FLAME PROOF RESISTOR
R709	1	FR2551470J-LP	FLAME PROOF RESISTOR
R711	1	FR255102J-LP	CARBON RESISTOR
R713	1	KA255101J	CARBON RESISTOR
R715	1	KA255127J	CARBON RESISTOR
R717	1	KA255123J	CARBON RESISTOR
R719	1	KA255104J	CARBON RESISTOR
R721+723	2	SA-2M1123J-LP	METAL OXIDE RESISTOR
R725	1	KA255153J	CARBON RESISTOR
R727	1	SA-2M1082J-LP	METAL OXIDE RESISTOR
R729+731	2	FR2551471J-LP	FLAME PROOF RESISTOR
R733	1	FR255102J-LP	CARBON RESISTOR
R735	1	KA255153J	CARBON RESISTOR
R737	1	SA-2M1082J-LP	METAL OXIDE RESISTOR
R739	1	FR255102J-LP	CARBON RESISTOR
R741	1	FR2551471J-LP	FLAME PROOF RESISTOR
R743	1	FR255101J-LP	FLAME PROOF RESISTOR
R745+747	2	FR50374R7J-LP	FLAME PROOF RESISTOR
R749	1	FR503731J-LP	FLAME PROOF RESISTOR
R751,753	2	FR50374R7J-LP	FLAME PROOF RESISTOR
R755	1	FR255102J-LP	CARBON RESISTOR
R757	1	FR2551471J-LP	FLAME PROOF RESISTOR
R759	1	FR255101J-LP	FLAME PROOF RESISTOR
R761,763	2	HPC722R2KAZLF	CEMENT RESISTOR
R765+767	2	SA-2M1407J-LP	METAL OXIDE RESISTOR
SVR601	1	SVM-08538103	SEMI-VARIABLE RESISTOR
SVR603	1	SVM-08538102	SEMI-VARIABLE RESISTOR
COILS			
L001	1	104001	AIR-CORE COIL
MISCELLANEOUS			
MP610	1	538-EH	CONNECTOR
MP650	1	538-EH	CONNECTOR
MP610	1	B3P5-VH	CONNECTOR
MP690	1	B3P5-VH	CONNECTOR
TP601	1	WB-2	TERMINAL PIN
33E 3	6	AC236	MICA
33E 6	2	AC236	MICA
36E16	47	9E-T05	JUMP WIRE
36E17	2	1P5-1041-9	JUMP WIRE

MAIN AMP R CH PCB ASS'Y

REF. NO.	Q'TY	PART NO.	DESCRIPTION
P.C. BOARD			
45E 6	1	MR-708	PRINTED CIRCUIT BOARD
SEMICONDUCTORS			
D622+624, 626+628, 630	14	151588	DIODE
D630	1	155144	DIODE
D632+634	2	151588	DIODE
D636	1	155144	DIODE
D638+640	2	151588	DIODE
D642+644	2	0KX20	DIODE
D646+648	2	1N4003	DIODE
Q602	1	25A1335-GR	TRANSISTOR
Q604	1	25C3378-GR	TRANSISTOR
Q606+608	2	25A1335-GR	TRANSISTOR
Q610+612, 614+616, 618+620, 622+624, 626+628	6	25C3378-GR	TRANSISTOR
Q618	1	25A1370-E+F	TRANSISTOR
Q620+622, 624+626, 628	3	25C3667-E+F	TRANSISTOR
Q630	1	25A1370-E+F	TRANSISTOR
Q632	1	25C1953-R+5	TRANSISTOR
Q634	1	25C3378-GR	TRANSISTOR
Q636	1	25C3907-R+0	TRANSISTOR
Q638	1	25A1516-R+0	TRANSISTOR
Q640	1	25A1302-R+0	TRANSISTOR
Q642+644	2	25D600K-E+F	TRANSISTOR
Q646	1	25C3281-R+0	TRANSISTOR
Q648	1	25A1335-GR	TRANSISTOR
Q650	1	25C3281-R+0	TRANSISTOR
Q652+654	2	25C3281-R+0	TRANSISTOR
Q656	1	25B631K-E+F	TRANSISTOR

REF. NO.	Q'TY	PART NO.	DESCRIPTION
Q650	1	2SA1302-R-D	TRANSISTOR
Z0A82+654	2	Z350-12Z	ZENER DIODE 1/2W-12-2V
Z0A96+608	2	Z050-06Z	ZENER DIODE 1/2W-6-0.6V
CAPACITORS			
C002+054	2	ECQV16H84JZ	METALLIZED FILM CAPACITOR
C066	1	MY-50V102J	MYLAR CAPACITOR
C068+010	2	NS-25TWR20M	ELECTROLYTIC CAPACITOR
C012	1	HE405JSL491K	CERAMIC CAPACITOR
C014	1	NS-50TMI90M	ELECTROLYTIC CAPACITOR
C016	1	HE905JSL391K	CERAMIC CAPACITOR
C018	1	NS-10TWR21M	ELECTROLYTIC CAPACITOR
C020	1	NS-16T1010M	ELECTROLYTIC CAPACITOR
* C022	1	NS100T4R7M	ELECTROLYTIC CAPACITOR
C024	1	HE405JSL390K	CERAMIC CAPACITOR
C026	1	HM905JSH220K	CERAMIC CAPACITOR
C028	1	NS-16T1010M	ELECTROLYTIC CAPACITOR
C030	1	ECQV1H04JZ	METALLIZED FILM CAPACITOR
C032+634	2	HE405JYD102M	CERAMIC CAPACITOR
* C036	1	NS100T4R7M	ELECTROLYTIC CAPACITOR
C038	1	HE905JSL471K	CERAMIC CAPACITOR
C040	1	ECQV1H04JZ	METALLIZED FILM CAPACITOR
C042	1	HE905JSL471K	CERAMIC CAPACITOR
C044	1	HE905JSL151K	CERAMIC CAPACITOR
C046	1	HE905JSL101K	CERAMIC CAPACITOR
C048	1	HE905JSL331K	CERAMIC CAPACITOR
C050	1	MY100V5104K-KF	MYLAR CAPACITOR
C052	1	HE905JSL151K	CERAMIC CAPACITOR
C054	1	HE905JSL101K	CERAMIC CAPACITOR
C056	1	HE905JSL331K	CERAMIC CAPACITOR
C058	1	MY100V5104K-KF	MYLAR CAPACITOR
C060	1	MY100V5475K	MYLAR CAPACITOR
C061	1	NS100T4R7M-KF	ELECTROLYTIC CAPACITOR
* C062+624	2	NS-50TWR20M	ELECTROLYTIC CAPACITOR
C068	1	ECQV1H04JZ	METALLIZED FILM CAPACITOR
RESISTORS			
R002	1	KA2551101J	CARBON RESISTOR
R004	1	KA2551235J	CARBON RESISTOR
R006	1	KA2551303J	CARBON RESISTOR
* R008+010	2	KA255222J	CARBON RESISTOR
R012	1	KA2551101J	CARBON RESISTOR
R014	1	SA-1W182J-LP	METAL OXIDE RESISTOR
R016	1	KA2551122J	CARBON RESISTOR
R018+620,	3	KA2551102J	CARBON RESISTOR
R22			
R24	1	KA2551152J	CARBON RESISTOR
R026+628	2	KA2551273J	CARBON RESISTOR
R030+032	2	KA2551471J	CARBON RESISTOR
R034	1	FR255130J-LP	FLAME PROOF RESISTOR
R036	1	KA2551104J	CARBON RESISTOR
R038+040	2	KA2551271J	CARBON RESISTOR
R042	1	KA2551102J	CARBON RESISTOR
R044	1	KA2551103J	CARBON RESISTOR
R046	1	KA2551353J	CARBON RESISTOR
R048+050	2	MF255241F	METAL OXIDE RESISTOR
R052+654	2	KA2551102J	CARBON RESISTOR
R056	1	KA2551101J	CARBON RESISTOR
R058	1	KA2551102J	CARBON RESISTOR
R060+662	2	KA2551221J	CARBON RESISTOR
R064	1	KA2551102J	CARBON RESISTOR
R066	1	KA2551361J	CARBON RESISTOR
R068	1	KA2551102J	CARBON RESISTOR
R070	1	SA-1W1123J-LP	METAL OXIDE RESISTOR
* R072+674	2	KA2551472J	CARBON RESISTOR
R076	1	KA2551223J	CARBON RESISTOR
R078	1	FR2551331J-LP	FLAME PROOF RESISTOR
R080	1	FR2551470J-LP	FLAME PROOF RESISTOR
R082	1	FR2551690J-LP	FLAME PROOF RESISTOR
R084	1	KA2551101J	CARBON RESISTOR
R086	1	KA2551353J	CARBON RESISTOR
R088+690	2	FR2551353J	FLAME PROOF RESISTOR
* R092	1	FR2551690J-LP	FLAME PROOF RESISTOR
R094	1	FR2551151J-LP	FLAME PROOF RESISTOR
R096	1	FR2551690J-LP	FLAME PROOF RESISTOR
R098+700	2	FR2551272J	FLAME PROOF RESISTOR
R102	1	KA2551361J	CARBON RESISTOR
R104	1	FR2551470J-LP	FLAME PROOF RESISTOR
R106+708	2	FR2551471J-LP	FLAME PROOF RESISTOR
R110	1	FR2551470J-LP	FLAME PROOF RESISTOR
R112	1	FR2551102J-LP	FLAME PROOF RESISTOR
R114	1	KA2551101J	CARBON RESISTOR
R116	1	KA2551272J	CARBON RESISTOR
R118	1	KA2551123J	CARBON RESISTOR
R120	1	KA2551104J	CARBON RESISTOR
R122+724	2	SA-2W1423J-LP	METAL OXIDE RESISTOR
R126	1	KA2551153J	CARBON RESISTOR
R128	1	SA-2W1423J-LP	METAL OXIDE RESISTOR
* R130+732	2	FR2551102J-LP	FLAME PROOF RESISTOR
R134	1	FR2551102J-LP	FLAME PROOF RESISTOR
R136	1	KA2551153J	CARBON RESISTOR
R138	1	SA-2W1423J-LP	METAL OXIDE RESISTOR
R140	1	FR2551102J-LP	FLAME PROOF RESISTOR
R142	1	FR2551471J-LP	FLAME PROOF RESISTOR
R144	1	FR2551101J-LP	FLAME PROOF RESISTOR
R146+748	2	FR5051471J-LP	FLAME PROOF RESISTOR
R150	1	FR5051351J-LP	FLAME PROOF RESISTOR
R152+750	2	FR5051351J-LP	FLAME PROOF RESISTOR
R156	1	FR2551102J-LP	FLAME PROOF RESISTOR
R158	1	FR2551471J-LP	FLAME PROOF RESISTOR
R160	1	FR2551101J-LP	FLAME PROOF RESISTOR
R162+764	2	MP22282K2XL	CEMENT RESISTOR
R166+768	2	SA-2W1473J-LP	METAL OXIDE RESISTOR
R170	1	SA-1W1123J-LP	METAL OXIDE RESISTOR

REF. NO.	Q'TY	PART NO.	DESCRIPTION
SVR602	1	SVR-08538103	SEMI-VARIABLE RESISTOR
SVR604	1	SVR-08538102	SEMI-VARIABLE RESISTOR
COILS			
L602	1	104001	AIR-CORE COIL
MISCELLANEOUS			
MC630	1	MC04-606	MICRO SOCKET ASS'Y
MP670+640,	4	530-EH	CONNECTOR
645+660			
MP680	1	B3P5-VH	CONNECTOR
MP700	1	B3P5-VH	CONNECTOR
TP602	1	WB-2	TERMINAL PIN
37E 3	6	AC262	MICA
37E 6	2	AC238	MICA
40E16	49	5E-20S	JUMP WIRE
40E17	2	1P5-1041-9	JUMP WIRE
MAIN POWER SUPPLY PCB ASS'Y			
REF. NO.	Q'TY	PART NO.	DESCRIPTION
P.C. BOARD			
45E22	1	PS-709C	PRINTED CIRCUIT BOARD
SEMICONDUCTORS			
0B01	1	HP252	DIODE
0B02	1	10A842	DIODE
0B03+006	4	1NS404-F	DIODE
0B07	1	1N4002	DIODE
0B01	1	25B1133-R-5	TRANSISTOR
0B02	1	2501666-R-5	TRANSISTOR
IC801	1	MS230L	IC
CAPACITORS			
C001	1	NS-50TWR22M	ELECTROLYTIC CAPACITOR
C002+003	2	516-25T102KWF	ELECTROLYTIC CAPACITOR
C004	1	NS-25TWR70M	ELECTROLYTIC CAPACITOR
C005	1	NS-50TMI90M	ELECTROLYTIC CAPACITOR
C006	1	NS-25TWR70M	ELECTROLYTIC CAPACITOR
C007	1	NS100T4R7M-KF	ELECTROLYTIC CAPACITOR
C008+012	5	HM155JYD103M	CERAMIC CAPACITOR
RESISTORS			
R001+002	2	KA2551153J	CARBON RESISTOR
R003	1	KA2551221J	CARBON RESISTOR
R004	1	KA2551361J	CARBON RESISTOR
R005	1	HF255135F	METAL FILM RESISTOR
R006	1	KA2551561J	CARBON RESISTOR
R007	1	KA2551221J	CARBON RESISTOR
R008	1	HF25513162F	METAL FILM RESISTOR
R009	1	KA2551153J	CARBON RESISTOR
R010	1	FR5051152J-LP	FLAME PROOF RESISTOR
R011	1	KA2551153J	CARBON RESISTOR
MISCELLANEOUS			
* P003	1	WB-3	TERMINAL PIN
P004	1	WB-5	TERMINAL PIN
P050	1	1MSA-1068-04D	MINI TERMINAL PLATE
P060+070	2	1MSA-1068-02U	MINI TERMINAL PLATE
P080	1	1MSA-1068-04D	MINI TERMINAL PLATE
* F001+004	4	FU-621034-312	FUSE
MC820	1	MC06-009	MICRO SOCKET ASS'Y
MC830	1	MC03-602	MICRO SOCKET ASS'Y
MC840	1	MC03-603	MICRO SOCKET ASS'Y
MP720	1	B68-EH-A	CONNECTOR
* A1E14	8	S-N5051	FUSE HOLDER
42E14	22	5E-10S	JUMP WIRE
SPEAKER TERMINAL PCB ASS'Y			
REF. NO.	Q'TY	PART NO.	DESCRIPTION
P.C. BOARD			
45E23	1	SP-709C	PRINTED CIRCUIT BOARD
SEMICONDUCTORS			
0701+704	4	1S1588	DIODE
0705+709	5	1N4002	DIODE
0659	1	25C1815-GR	TRANSISTOR
0660+661	2	25C2240-GR	TRANSISTOR
IC701	1	TA7317P	IC
ZD701	1	Z050-147	ZENER DIODEE 1/2W-14.7V
CAPACITORS			
C701	1	NS-25TWR70M	ELECTROLYTIC CAPACITOR
C702	1	HE405JYD102M	CERAMIC CAPACITOR

REF. NO.	Q'TY	PART NO.	DESCRIPTION
C703	1	NS-90TW47H	ELECTROLYTIC CAPACITOR
C704	1	NS-251W20M	ELECTROLYTIC CAPACITOR
RESISTORS			
R771-772	2	5A-2W471J-LP	METAL OXIDE RESISTOR
R773-775	3	KA255156J	CARBON RESISTOR
R776	1	KA255182J	CARBON RESISTOR
R777	1	KA255133J	CARBON RESISTOR
R778	1	KA255156J	CARBON RESISTOR
R779	1	KA255147J	CARBON RESISTOR
R780	1	KA255103J	CARBON RESISTOR
R781	1	KA255122J	CARBON RESISTOR
R782	1	KA255104J	CARBON RESISTOR
R783-784	2	KA255103J	CARBON RESISTOR
R785	1	KA255122J	CARBON RESISTOR
R786-787	2	KA255103J	CARBON RESISTOR
R788-789	2	5A-2W471J-LP	METAL OXIDE RESISTOR
MISCELLANEOUS			
W801-802	2	W8-2	TERMINAL PIN
MC690-700	2	MA03-617	MICRO SOCKET ASS'Y
MC720	1	MC06-607	MICRO SOCKET ASS'Y
NP101	1	S5B-PH-K	CONNECTOR
RL701-704	4	AJ839091	RELAY
RL705	1	AG80249	RELAY
* S5701-702	2	YK031-0344	SPEAKER SOCKET 4P
43E29	11	5E-T05	JUMP WIRE

BACK UP POWER SUPPLY PCB ASS'Y

REF. NO.	Q'TY	PART NO.	DESCRIPTION
P.C. BOARD			
44E24	1	BP-709C	PRINTED CIRCUIT BOARD
SEMICONDUCTORS			
9808-809	2	1N4402	DIODE
D010-811	2	1N4402	DIODE
D012	1	1N4402	DIODE
9803	1	25C1815-GR	TRANSISTOR
CAPACITORS			
* C015-814	2	EC0U1A03MH	METALLIZED FILM CAPACITOR
C015	1	NS-16TW22M-KF	ELECTROLYTIC CAPACITOR
C016	1	NS-501W2R2M	ELECTROLYTIC CAPACITOR
C017	1	NS-351W20M	ELECTROLYTIC CAPACITOR
C018	1	NS-251W22M-KF	ELECTROLYTIC CAPACITOR
C019	1	NS-251W10M	ELECTROLYTIC CAPACITOR
RESISTORS			
* R012	1	KA255103J	CARBON RESISTOR
* R013	1	KA255147J	CARBON RESISTOR
R014	1	FR255147J-LP	FLAME PROOF RESISTOR
R015	1	KA255147J	CARBON RESISTOR
R016	1	KA255103J	CARBON RESISTOR
* R017	1	KA59K735J	CARBON RESISTOR
MISCELLANEOUS			
1W23	1	672520081R-C-D	SOLDER-PLATED WIRE
1W25	1	672520072B-C-D	SOLDER-PLATED WIRE
* 1W26	1	R-31Y16R27	CABLE ASS'Y
* 1W20	1	R-31Y16V22	CABLE ASS'Y
EL001	1	59851692	GND LUG
MC010	1	MC06-608	MICRO SOCKET ASS'Y
* RL801	1	V514MB-NR-UL	RELAY
45E24	1	5E-T05	JUMP WIRE

FILTER CAPACITOR PCB ASS'Y

REF. NO.	Q'TY	PART NO.	DESCRIPTION
P.C. BOARD			
46E 9	1	CP-710A	PRINTED CIRCUIT BOARD
CAPACITORS			
C020-821	2	BC80103MC70GHS	ELECTROLYTIC CAPACITOR
C022-823	2	BC80103MH05GHS	ELECTROLYTIC CAPACITOR
MISCELLANEOUS			
ELB02-803	2	59851692	GND LUG
44E17	2	MA05-620	MICRO SOCKET ASS'Y
44E19	5	1P5-133A-7	JUMP WIRE
44E20	3	1P5-1041-9	JUMP WIRE
PTC01-802	2	RD0185A	P.T.C.

EQ FUNCTION SWITCH PCB ASS'Y

REF. NO.	Q'TY	PART NO.	DESCRIPTION
P.C. BOARD			
44E11	1	FEQ-711B	PRINTED CIRCUIT BOARD
SEMICONDUCTORS			
D401-415	15	15S176	DIODE
Q401-402	2	25C3329-GR+BL	TRANSISTOR
Q403-404	2	25A1316-GR+BL	TRANSISTOR
Q405-406	2	25A1335-GR	TRANSISTOR
Q407-408	2	25C3376-GR	TRANSISTOR
Q409-412	4	25A1700-GR+BL	TRANSISTOR
Q413-414	2	25A1335-GR	TRANSISTOR
Q415-416	2	25C3376-GR	TRANSISTOR
Q417-420	4	25A1335-GR	TRANSISTOR
Q421-422	2	25C3376-GR	TRANSISTOR
Q423-424	2	25A1335-GR	TRANSISTOR
Q425-426	2	25C2878-A+B	TRANSISTOR
Q427	1	25B1066-R+S	TRANSISTOR
Q429	1	25B1133-R+S	TRANSISTOR
Q430-431	2	25A1202A-E+F	TRANSISTOR
Q432	1	25C2458-Y+GR	TRANSISTOR
Q450	1	25C1815-Y+GR	TRANSISTOR
Q451	1	25A1015-Y+GR	TRANSISTOR
IC401	1	UP06362C	IC
IC402	1	LC404	IC
IC403	1	LC4001B	IC
IC406-405	2	R5237L	IC
IC406	1	AN701F	IC
IC407	1	AN712F	IC
ZD401-402	2	Z050-127	ZENER DIODE 1/2Wx12.7V
ZD403-404	2	Z050-049	ZENER DIODE 1/2Wx4.9V
CAPACITORS			
C380-381	2	NS-90TW10M	ELECTROLYTIC CAPACITOR
C382	1	NS-16TW10M	ELECTROLYTIC CAPACITOR
C383-384	2	NS-90TW10M	ELECTROLYTIC CAPACITOR
C401-402	2	MY-S0VU102J	MYLAR CAPACITOR
* C403-404	2	HE705JFF103Z	CERAMIC CAPACITOR
C405-406	2	HE35JFF473Z	CERAMIC CAPACITOR
C407-412	6	NS08R31W471M	ELECTROLYTIC CAPACITOR
C413-416	4	HE403JSL560K	CERAMIC CAPACITOR
C417-418	2	NS08R31W10M	ELECTROLYTIC CAPACITOR
C419-420	2	NS-25TW10M	NON-POLAR ELECTROLYTIC
C421-422	2	HE905JSL101K	CERAMIC CAPACITOR
C423-424	2	HE905JSL221K	CERAMIC CAPACITOR
C425-426	2	HE905JSL101K	CERAMIC CAPACITOR
C427-428	2	NP-16TW10M	NON-POLAR ELECTROLYTIC CAP.
C429-430	2	NS-10W1221	NON-POLAR CAPACITOR
C431-432	2	MY-S0VU752J	MYLAR CAPACITOR
C433-434	2	MY-S0VU273J	MYLAR CAPACITOR
C435-436	2	HE905JSL6K	CERAMIC CAPACITOR
C437-438	2	MY-S0VU222J	MYLAR CAPACITOR
C439-440	2	NP-16TW10M	NON-POLAR ELECTROLYTIC CAP.
C441-442	2	HE705JFF103Z	CERAMIC CAPACITOR
C443-448	6	NS-25TW10M	ELECTROLYTIC CAPACITOR
C449-450	2	EC0V1H04J2	METALLIZED FILM CAPACITOR
C451-452	2	NS-16TW101M	ELECTROLYTIC CAPACITOR
C453-456	4	NS-50TW2R2M	ELECTROLYTIC CAPACITOR
C457-458	2	HE705JFF103Z	CERAMIC CAPACITOR
C459	1	NS-16TW71M-KF	ELECTROLYTIC CAPACITOR
C460	1	NS-10TW17M	ELECTROLYTIC CAPACITOR
C461-462	2	NS-90TW10M	ELECTROLYTIC CAPACITOR
C463-464	2	EC0V1H04J2	METALLIZED FILM CAPACITOR
C465-466	2	HE705JFF103Z	CERAMIC CAPACITOR
C467	1	HE135JFF473Z	CERAMIC CAPACITOR
C469	1	HE705JFF103Z	CERAMIC CAPACITOR
RESISTORS			
R401-402	2	KA205T100J	CARBON RESISTOR
R403-404	2	KA205T101J	CARBON RESISTOR
R405-406	2	KA165T224J	CARBON RESISTOR
R407-408	2	KA165T102J	CARBON RESISTOR
R409-410	2	KA165T224J	CARBON RESISTOR
R411-412	2	KA165T102J	CARBON RESISTOR
R433-416	4	MF165T133F	METAL FILM RESISTOR
R417-420	4	MF165T192F	METAL FILM RESISTOR
R421-422	2	KA205T60RJ	CARBON RESISTOR
R423-426	4	KA205T102J	CARBON RESISTOR
R427-428	2	KA205T101J	CARBON RESISTOR
R429-432	4	KA205T361J	CARBON RESISTOR
R433-434	2	KA205T104J	CARBON RESISTOR
R435-436	2	KA205T474J	CARBON RESISTOR
R437-438	2	KA165T472J	CARBON RESISTOR
R439-440	2	KA165T474J	CARBON RESISTOR
R441-442	2	KA165T533J	CARBON RESISTOR
R443-444	2	KA165T101J	CARBON RESISTOR
R449-450	2	KA165T201J	CARBON RESISTOR
R451-452	2	KA165T103J	CARBON RESISTOR
R453-454	2	KA165T101J	CARBON RESISTOR
R455-456	2	KA165T333J	CARBON RESISTOR
R457-458	2	KA165T181J	CARBON RESISTOR
R459-460	2	KA165T101J	CARBON RESISTOR
R461-462	2	KA165T103J	CARBON RESISTOR
R463-464	2	KA165T271J	CARBON RESISTOR
R465-466	2	KA165T101J	CARBON RESISTOR
R467-468	2	KA165T081J	CARBON RESISTOR
R469-470	2	KA165T333J	CARBON RESISTOR
R471-472	2	KA165T102J	CARBON RESISTOR
R473-474	2	KA165T221J	CARBON RESISTOR

REF. NO.	Q'TY	PART NO.	DESCRIPTION
R475-476	2	K1A105102J	CARBON RESISTOR
R477-478	2	K1A105104J	CARBON RESISTOR
R479-480	2	K1A1051472J	CARBON RESISTOR
R481-483	3	K1A105104J	CARBON RESISTOR
R484	1	5A-1W101J-LP	METAL OXIDE RESISTOR
R485	1	K1A105122J	CARBON RESISTOR
R486	1	5A-1W101J-LP	METAL OXIDE RESISTOR
R487	1	K1A105122J	CARBON RESISTOR
R488-489	2	R5050110J-LP	FLAME PROOF RESISTOR
R490-491	2	K1A105175J	CARBON RESISTOR
R492-493	2	K1A105103J	CARBON RESISTOR
R494-497	4	K1A105105J	CARBON RESISTOR
R498-499	4	K1A105105J	CARBON RESISTOR
591-592			
R503-504	2	K1A105124J	CARBON RESISTOR
R505-506	2	K1A105105J	CARBON RESISTOR
R507-511	5	K1A105104J	CARBON RESISTOR
R512-513	2	K1A105103J	CARBON RESISTOR
R514	1	K1A105122J	CARBON RESISTOR
R515	1	K1A105175J	CARBON RESISTOR
R516	1	MF105136F	METAL FILM RESISTOR
R517	1	MF105143F	METAL FILM RESISTOR
R518	1	K1A105147J	CARBON RESISTOR
R519	1	K1A105122J	CARBON RESISTOR
R520	1	K1A105122J	CARBON RESISTOR
R521	1	K1A105103J	CARBON RESISTOR
R522	1	K1A105122J	CARBON RESISTOR
R523	1	K1A105147J	CARBON RESISTOR
R524	1	MF105136F	METAL FILM RESISTOR
R525	1	MF105143F	METAL FILM RESISTOR
COILS			
L401-402	2	15-168-0-0	CHOKO COIL
SWITCHES			
3W401	1	5W-5422104	SLIDE SWITCH
3W402	1	5W-5232103	SLIDE SWITCH
MISCELLANEOUS			
1W 3	1	2HJ5264822-J-J	4-LEAD, FLAT CABLE
1W 6	1	2HJ5268810-J-J	8-LEAD, FLAT CABLE
* MC415	1	MZ02-635	CONNECTOR
* MC416	1	MZ02-636	CONNECTOR
MP460	1	B78-PH-K	CONNECTOR
MP570	1	B48-EH-A	CONNECTOR
MP810-820	2	B88-PA-A	CONNECTOR
MP960	1	B88-PH-K	CONNECTOR
RJ402	1	T5858-AA	RCA JACK 4P
30E26	1	MK09-627	MICRO SOCKET ASS'Y
30E27	1	MK07-628	MICRO SOCKET ASS'Y
30E30	1	MK10-626	MICRO SOCKET ASS'Y
32E16	4	5E-T05	JUMP WIRE
32E17	10	4E-T05	JUMP WIRE

TOPE PCB ASS'Y

REF. NO.	Q'TY	PART NO.	DESCRIPTION
P.C. BOARD			
46E12	1	T0N-7118	PRINTED CIRCUIT BOARD
SEMICONDUCTORS			
IC551-552	2	UPC4574C	IC
CAPACITORS			
C551-552	2	LL-167W100M	LOW LEAK. ELECTROLYTIC CAP.
C553-554	2	UP0508221K	CERAMIC CAPACITOR
C555-558	4	HE405-56AK	CERAMIC CAPACITOR
C559-560	2	LL-167W100M	LOW LEAK. ELECTROLYTIC CAP.
C561-562	2	ECGV1H04JZ	METALLIZED FILM CAPACITOR
C563-564	2	ECGV1074JZ	METALLIZED FILM CAPACITOR
C565-566	2	ECGV1H04JZ	METALLIZED FILM CAPACITOR
C567-568	2	ECGV1H04JZ	METALLIZED FILM CAPACITOR
C569-570	2	ECGV1H04JZ	METALLIZED FILM CAPACITOR
C571-572	2	ECGV1H04JZ	METALLIZED FILM CAPACITOR
C573-574	2	NY-50V0103J	NYLAR CAPACITOR
C575-576	2	NY-50V0103J	NYLAR CAPACITOR
C577-578	2	NY-50V0222J	NYLAR CAPACITOR
C579-580	2	NY-50V0103J	NYLAR CAPACITOR
C581-582	2	NY-50V1074JZ	NYLAR CAPACITOR
C583-584	2	NY-50V0222J	NYLAR CAPACITOR
C585-586	2	HE705JYF103Z	CERAMIC CAPACITOR
RESISTORS			
R526-551, 552	3	K1A1051225J	CARBON RESISTOR
R553-554	2	K1A105104J	CARBON RESISTOR
R555-562	8	K1A1051332J	CARBON RESISTOR
R563-564	2	K1A105103J	CARBON RESISTOR
R565-570	6	K1A105102J	CARBON RESISTOR
R571-572	2	K1A105161J	CARBON RESISTOR
R573-574	2	K1A1051302J	CARBON RESISTOR
R575-576	2	K1A105103J	CARBON RESISTOR
R577-580	4	K1A105102J	CARBON RESISTOR
R581-582	2	K1A105161J	CARBON RESISTOR
R583-584	2	K1A1051302J	CARBON RESISTOR
R585-586	2	K1A105103J	CARBON RESISTOR

REF. NO.	Q'TY	PART NO.	DESCRIPTION
R587-588	2	K1A105102J	CARBON RESISTOR
R589-600	12	K1A1051225J	CARBON RESISTOR
RA551-553	3	RA-IP-03225J	BLOCK RESISTOR
VR551-552	2	VB716-203826K5	ROTARY POTENTIOMETER
SWITCHES			
5W551	1	5W-1300190	PUSH SWITCH
5W552	1	5W-1100194	PUSH SWITCH
5W553-554	2	5W-4636192	LEVER SWITCH
MISCELLANEOUS			
W550	1	C791K6WR26GCGF	PCB CONNECTOR
W540	1	C791K6W425GCGF	PCB CONNECTOR
W550	1	C791K6W25GCGF	PCB CONNECTOR
W560	1	C791K6W126GCGF	PCB CONNECTOR
1W 1	1	2HJ5262015AJJ	2-LEAD, FLAT CABLE
1W 3	1	2HJ5263908-J-J	3-LEAD, FLAT CABLE
1W 4	1	2HJ5263911-J-J	3-LEAD, FLAT CABLE
1W 5	1	2HJ5263918-J-J	3-LEAD, FLAT CABLE
1W 6	1	2HJ5263926-J-J	3-LEAD, FLAT CABLE
2Y6 6	8	5E-T05	JUMP WIRE
2Y6 7	7	4E-T05	JUMP WIRE
2Y6 9	1	MK06-621	MICRO SOCKET

AUDIO ACCESSORY PCB ASS'Y

REF. NO.	Q'TY	PART NO.	DESCRIPTION
P.C. BOARD			
46E13	1	5V-7118	PRINTED CIRCUIT BOARD
SEMICONDUCTORS			
D501-509	9	155176	DIODE
Q501-502	2	25C2458-Y-GR	TRANSISTOR
IC501	1	NJM20435-D	IC
IC502	1	UP06360C	IC
CAPACITORS			
C471-474	4	ECGV1H224JZ	METALLIZED FILM CAPACITOR
C475-476	2	LL-257W100M	LOW LEAK. ELECTROLYTIC CAP.
C477-478	2	HE505JSL101K	CERAMIC CAPACITOR
C479-482	4	LL-107W220M	LOW LEAK. ELECTROLYTIC CAP.
C483-484	2	HE705JYF103Z	CERAMIC CAPACITOR
C485-486	2	NS-257W100M	ELECTROLYTIC CAPACITOR
C487	1	HE705JYF105Z	CERAMIC CAPACITOR
RESISTORS			
R527	1	K1A1051333J	CARBON RESISTOR
R527	1	K1A1051223J	CARBON RESISTOR
R528	1	K1A105103J	CARBON RESISTOR
R529	1	K1A1051475J	CARBON RESISTOR
R530	1	K1A105103J	CARBON RESISTOR
R531-532	2	K1A105104J	CARBON RESISTOR
R533-534	2	K1A105134J	CARBON RESISTOR
R535-536	2	K1A105151J	CARBON RESISTOR
R538	1	K1A1051333J	CARBON RESISTOR
R539-540	2	K1A105151J	CARBON RESISTOR
R541-542	2	K1A1051224J	CARBON RESISTOR
R543-544	2	K1A105104J	CARBON RESISTOR
R545-546	2	K1A1051622J	CARBON RESISTOR
R547-548	2	K1A105161J	CARBON RESISTOR
R549-550	2	FR2551080J-LP	FLAME PROOF RESISTOR
VR501	1	VB816-103MMX	ROTARY POTENTIOMETER
SVR501	1	SVR-06T50102	SEMI-VARIABLE
SWITCHES			
5W501	1	5W-1400187	PUSH SWITCH
5W502	1	5W-1200188	PUSH SWITCH
MISCELLANEOUS			
1W 8	2	2HJ5264812-J-J	4-LEAD, FLAT CABLE
26E29	1	MC03-615	MICRO SOCKET ASS'Y
26E30	1	MC03-616	MICRO SOCKET ASS'Y
27E26	16	5E-T05	JUMP WIRE
27E27	3	4E-T05	JUMP WIRE
27E28	1	MC03-604	MICRO SOCKET ASS'Y
27E29	1	MC03-611	MICRO SOCKET ASS'Y
27E30	1	MK06-629	MICRO SOCKET ASS'Y
30E25	1	MC04-605	MICRO SOCKET ASS'Y
30E26	1	MK07-622	MICRO SOCKET ASS'Y

MAIN VOLUME PCB ASSY

REF. NO.	Q'TY	PART NO.	DESCRIPTION
P.C. BOARD			
48E14	1	VR-7110	PRINTED CIRCUIT BOARD
SEMICONDUCTORS			
IC961	1	NJM20435-D	IC
CAPACITORS			
C961+962	2	HE705JYF103Z	CERAMIC CAPACITOR
RESISTORS			
R961	1	KA165T132J	CARBON RESISTOR
962	1	KA165T081J	CARBON RESISTOR
VR961	1	VBV16-20302NK5	ROTARY POTENTIOMETER
MISCELLANEOUS			
Z6E B	1	5E-T05	JUMP WIRE
30E29	1	MK06-623	MICRO SOCKET ASSY

HEADPHONE PCB ASSY

REF. NO.	Q'TY	PART NO.	DESCRIPTION
P.C. BOARD			
48E15	1	HP-711B	PRINTED CIRCUIT BOARD
MISCELLANEOUS			
HP951	1	HLJ0541-01-010	MIC JACK

INDICATORS PCB ASSY

REF. NO.	Q'TY	PART NO.	DESCRIPTION
P.C. BOARD			
48E16	1	LD-711B	PRINTED CIRCUIT BOARD
SEMICONDUCTORS			
LD951	1	SLR-34YCF-M-N LED	LED
LD952	1	SLR-34NCF-M-P LED	LED
RESISTORS			
R951+952	2	KA165T681J	CARBON RESISTOR
MISCELLANEOUS			
Z9E13	1	MK03-610	MICRO SOCKET ASSY

BRIDGING SWITCH PCB ASSY

REF. NO.	Q'TY	PART NO.	DESCRIPTION
P.C. BOARD			
48E17	1	BS-711B	PRINTED CIRCUIT BOARD
SWITCHES			
SW951	1	5SB022	SLIDE SWITCH
MISCELLANEOUS			
Z9E19	1	MK02-601	MICRO SOCKET ASSY
Z9E20	1	MK03-618	MICRO SOCKET ASSY

TAPE SELECTOR PCB ASSY

REF. NO.	Q'TY	PART NO.	DESCRIPTION
P.C. BOARD			
48E18	1	TR-711B	PRINTED CIRCUIT BOARD
SEMICONDUCTORS			
D351+352	2	15S176	DIODE
D353	1	M4700	DIODE
D354	1	15S176	DIODE
RESISTORS			
Q351+352	2	25C2878-A+B	TRANSISTOR
Q353	1	25A1048-Y+GR	TRANSISTOR
Q354	1	25C2498-Y+GR	TRANSISTOR
IC351			
IC352	1	NJM20435-D	IC
IC353	1	UPD6362C	IC
CAPACITORS			
C351+352	2	LL-16T100M	LOW LEAK. ELECTROLYTIC CAP.
C353+354	2	HE705JSL221K	CERAMIC CAPACITOR
C355+356	4	EC0W100JZ	METALLIZED FILM CAPACITOR
C359+362	4	HE705JYF103Z	CERAMIC CAPACITOR
C363	1	NS-251W20M	ELECTROLYTIC CAPACITOR
C364	1	NS-251W470M	ELECTROLYTIC CAPACITOR
C365+368	4	LL-16T100M	LOW LEAK. ELECTROLYTIC CAP.
C369	1	HE705JYF103Z	CERAMIC CAPACITOR
C370+371	2	HE135JYF475Z	CERAMIC CAPACITOR

REF. NO.	Q'TY	PART NO.	DESCRIPTION
RESISTORS			
R351+352	2	KA165T104J	CARBON RESISTOR
R353+354	2	KA165T102J	CARBON RESISTOR
R355+356	2	KA165T104J	CARBON RESISTOR
R357+360	4	KA165T102J	CARBON RESISTOR
R361+362	2	KA165T104J	CARBON RESISTOR
R363+364	2	KA165T104J	CARBON RESISTOR
R365+366	2	KA165T083J	CARBON RESISTOR
R367+368	2	KA165T105J	CARBON RESISTOR
R369+370	2	KA165T101J	CARBON RESISTOR
R371+372	2	KA165T105J	CARBON RESISTOR
R373	1	KA165T223J	CARBON RESISTOR
R374	1	KA165T600J	CARBON RESISTOR
R375	1	KA165T224J	CARBON RESISTOR
R376	1	KA165T473J	CARBON RESISTOR
R377+378	2	KA165T103J	CARBON RESISTOR
R379+381	3	KA165T102J	CARBON RESISTOR
R382+383	2	KA165T224J	CARBON RESISTOR
R384+385	2	KA165T104J	CARBON RESISTOR
R386+387	2	KA165T474J	CARBON RESISTOR
R388+389	2	KA165T561J	CARBON RESISTOR
SWITCHES			
SW351	1	5W-5430186	SLIDE SWITCH
MISCELLANEOUS			
EL351	1	M1698	GRD LUG
MP430+520	2	B30-EH-A	CONNECTOR
MP980	1	B2B-EH-A	CONNECTOR
RJ351+352	2	T5858-AA	RCA JACK 4P
RJ353	1	T5916-AAAA	RCA JACK 6P
Z9E20	31	5E-T05	JUMP WIRE
Z9E21	6	4E-T05	JUMP WIRE
Z9E24	1	MK03-612	MICRO SOCKET ASSY
Z9E25	1	MK03-613	MICRO SOCKET ASSY

POWER SWITCH PCB ASSY

REF. NO.	Q'TY	PART NO.	DESCRIPTION
P.C. BOARD			
48E19	1	PH-711B	PRINTED CIRCUIT BOARD
SWITCHES			
PS901	1	5W-1100164	PUSH SWITCH
MISCELLANEOUS			
Z9E28	1	MK02-630	MICRO SOCKET ASSY

OTHER PARTS

REF. NO.	Q'TY	PART NO.	DESCRIPTION
MISCELLANEOUS			
1W25	2	0155200Y25-D-E	SOLDER PLATED WIRE
*1W24	1	6725200T17-D-D	SOLDER PLATED WIRE
*1W27	1	6725200007-D-D	SOLDER PLATED WIRE
ZW 7	2	GT-M04W15	GLASS TUBE
*ZM10	1	U9-3/8B10	UL TYPE TUBE
ZM11	1	U9-5/8B095	UL TYPE TUBE
ZM12+M13	2	U9-4008015	UL TYPE TUBE
4H 4	1	CT-M04B008	SHRINKABLE TUBE
4M21	23	N45092	TAPE+DOUBLE FACED
5H 1-M 3	5	N45335	LABEL+SERIAL NO.
5H 4	1	N45093	ANT CAUTION LABEL
*5H 5	1	N41939	LABEL+ FUSE
*5H 6	1	N44043	LABEL+ SA1045(LIGHTNING FLASH)
5M20	1	N45469	LABEL+POWER IND.
*5M27	1	N45260	PROTECTION SHEET
*5M28	1	BK3035	SAFETY INSTRUCTION SHEET
*5M29	1	N44074	CAUTION SHEET+POLARIZED PLUG
47E16+E17	15	BK-1	CORD CLAMP
47E18+E19	3	NG-3167	CORD CLAMP

FRONT PANEL

REF. NO.	Q'TY	PART NO.	DESCRIPTION
SWITCHES			
24E 1	1	5W-4X30185	LEVER SWITCH
24E 2	1	5WR20	REMOTE WIRE
MISCELLANEOUS			
1M 1	1	N21440A-1	FRONT PANEL
1M 3	1	N21440A-1	FRONT GLASS
1M 5	1	N21450A	DISPLAY FRAME
1M 6	1	N44073	FRONT GLASS BACK SHEET
1M10	1	62-2320-1	TUNING KNOB 45
1M11	1	N44070-2	KNOB 33
1M12	2	KNOB0448-0226	KNOB 18 (POTENTIOMETER)
1M13	1	62-1111-1-0	PUSH BUTTON
1M14	10	62-1111-0-0	PUSH BUTTON
1M15	8	N44957-BK	PUSH BUTTON
1M16	1	N44988-RD	PUSH BUTTON
1M17	8	N44956-BK	PUSH BUTTON
1M19	3	KNOB-0449A	LEVER KNOB
1M20	1	N31033	LED GUIDE
1M21	1	N45299	BUTTON GUIDE
1M22	1	SPA-0122	BUTTON GUIDE
1M23	2	62-3480-0-0	BUTTON FRAME
1M25	3	SPA-0124	LEVER KNOB GUIDE
1M27	1	N44877	FILTER
1M29	23	N44802A	LED CHIP
3M 1	1	N21452	FRONT CHASSIS
3M2	1	N44886	FITTINGS (HEADPHONE JACK)
3M23	3	N44887	FLYWHEEL
4M 1	17	N44959	KNOB SPRING
4M 6	1	N44880	LED SHIELD COVER
4M10	1	N44967-50	CABINET MAT
4M17	1	N45001	TUN KNOB COVER
4M18	1	N41940-3	SPACER
6M 2	3	T55-30X06-Y	TAP SCREW 5, FLAT HEAD, Y
6M 6+10+10	18	T58-30X06-Y	TAP SCREW 5, BIND HEAD, Y
M13+M17		M22	
7M24	2	T08-30X16-Y	TAP SCREW B, BIND HEAD, Y
7M1+M 2	8	TPM-30X08-Y	TAP SCREW P, ROUND HEAD, Y
8M10	1	TPM-30X10-Y	TAP SCREW P, ROUND HEAD, Y
16E27	1	F58A-5	ROTARY ENCODER
20E 4	6	KGL5-BRT	SPACER
20E 5	1	KGS5-BR	SPACER
29E25	1	META1-0105	SNAP PLATE

REAR PANEL AND CHASSIS

REF. NO.	Q'TY	PART NO.	DESCRIPTION
COILS			
L101	1	122043	LOADSTICK ANT.
* T901	1	NPT-23345	POWER TRANSFORMER
* T901	1	NPT-23245	POWER TRANSFORMER
SWITCHES			
SW901	1	EST-2011B	POWER SWITCH
SW902	1	5W-5220179	SWITCH
MISCELLANEOUS			
H430+431+801+802	4	05H-1625-HP	HEAT SINK
2M 1	1	N21451	CABINET
* 2M 3	1	N10444-1A	REAR PANEL
2M 5	1	N50951A	BOTTOM BOARD
2M 7	4	NG-7103-UL	FOOT
3M 2	1	N21456	FRONT SUB CHASSIS
3M 6	1	N50959	CENTER CHASSIS L
3M 7	1	N50960	CENTER CHASSIS R
3M 8	1	N44605	FITTINGS (HEAT SINK)
3M 9	2	N21455	SIDE CHASSIS
3M10	1	N44523	FITTINGS (P.T.)
3M11	1	N50995	SUPPORT CHASSIS (P.T.)
3M12	2	N44523	FITTINGS (P.T.)
3M13	1	N50727C	ANGLE L (P.C-B)
3M14	1	N50734C	ANGLE R (P.C-B)
3M15+M17	15	N44881	FITTINGS (P.C-B)

REF. NO.	Q'TY	PART NO.	DESCRIPTION
3M18	2	N44883	FITTINGS R (HEAT SINK)
3M19	1	N44885	FITTINGS FR (HEAT SINK)
3M20	1	N44884	FITTINGS FL (HEAT SINK)
3M21	2	N44523	FITTINGS (P.T.)
3M24	2	N42222	FITTINGS (THERMAL RELAY)
3M25	2	N44550	STUD 30
3M26	2	N21457	HEAT SINK
3M27	1	N44254	HEAT SINK
4M14	1	N44236-1	LOCK PLATE
4M15	2	N44996	SPACER
4M19	2	N44203-30	SPACER
4R22	2	N41966A-50-1	WASHER
* 4R23	1	N45182	TERMINAL COVER
6M 4+M 5	2	T58-26X05-B	TAP SCREW 5, BIND HEAD, B
6M 7+M 5+25	25	T58-30X06-Y	TAP SCREW 5, BIND HEAD, Y
M14+M16+M18+M21			
6M27+M30	5	T58-30X06-B	TAP SCREW 5, BIND HEAD, B
7M 1+M 5	16	T58-30X06-B	TAP SCREW 5, BIND HEAD, B
7M 6+M12	19	T5C-30X06-Y	TAP SCREW 5, WASHER FACED, Y
7M14	2	T5C-30X06-B	TAP SCREW 5, WASHER FACED, B
7M16	2	T08-26X08-B	TAP SCREW B, BIND HEAD, B
7M18+M22	24	T08-30X08-Y	TAP SCREW B, BIND HEAD, Y
7M16+M30	17	T58-30X06-B	TAP SCREW 5, BIND HEAD, B
3M 6+M 7	6	TPM-30X08-B	TAP SCREW P, ROUND HEAD, B
9M12	6	T08-30X10-B	TAP SCREW B, ROUND HEAD, B
9M14	4	T5C-40X08-Y	TAP SCREW 5, WASHER FACED, Y
9M17	6	T58-40X08-B	TAP SCREW 5, BIND HEAD, B
9M20	6	2C-STR40X14-2Y	TAP SCREW, BIND HEAD, Y
9M24	1	2C-STR30X18-2Y	TAP SCREW, WASHER FACED
9M27+M28	22	T08-30X12-Y	TAP SCREW B, BIND HEAD, Y
9M30	2	T5C-30X06-B	TAP SCREW 5, WASHER FACED, B
9M 1+M 3	18	2AKX0830-05-B	PLAIN WASHER, B
9M 6	6	2AKX0840-05-B	PLAIN WASHER, B
9M 9	1	2AKX0826-05-B	PLAIN WASHER, B
9M11	4	2TWX30-B	TOOTHED WASHER (B, BLACK)
9M13	1	2AKX0730-10-B	PLAIN WASHER, B
9M16	1	2AKX1250-03-B	PLAIN WASHER, B
* FJ901	1	FU-621034-314	FUSE
* RJ401	1	T5880-AAAA	RCA JACK 2P
TS901+902	2	UI2-10005-200A	THERMAL RELAY
23E29	2	KGL5-10RT	SPACER
* 47E 3	1	AC-T01F833	AC OULET
* 47E 4	1	FH-032C	FUSE HOLDER
* 47E 6	1	ACC-62205-4EE1	LINE CORD
* 47E 7	1	SR-4N-4	CORD STOPPER
47E 8	2	P2170	SHORT PIN
47E11	1	US-0029-1	GROUND TERMINAL
47E13	1	SR-4N-4	CORD STOPPER

PACKING

REF. NO.	Q'TY	PART NO.	DESCRIPTION
MISCELLANEOUS			
5M 6	1	0M-657B	INSTRUCTION MANUAL
* 5M 7	1	N40-WC2A	CARD+WARRANTY REGISTRATION
5M11	1	N21501A	SHIPPING CARTON
5M12	1	N21502B	OUTER CARTON
5M16	1	N21459-R	PACKING PAD R
5M17	1	N21458-L	PACKING PAD L
5M18	1	N4536B	PACKING PAD
* 5M21	1	N40612A-1	POLYETHYLENE BAG (UNIT)
5M22	1	N40487	POLYETHYLENE BAG (ACCESSORIES)
5M23	1	N45459	POLYETHYLENE BAG
5M24	1	N45458	PACKING PAD(REMOTE)
5M25	1	N45494	PACKING MATERIAL
5M26	1	N45000A	PACKING PAD
* 46E26	1	RC-1001-UAE	REMOTE CONTROL TRANSMITTER
46E28	1	UR-3-2	BATTERY
47E21	1	RC-1001-R	REMOTE CONTROL TRANSMITTER
47E22	1	UR-3-2	BATTERY
47E26	1	TANT-031	FR ANTENNA (CORD)
47E27	1	YAE21-0001C	WATCHING ADAPTOR

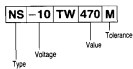
Classify Parts List

A: USA B: U.K. C: EUROPE & OTHERS
 AI: CANADA BI: AUSTRALIA/N.Z. CI: WEST GERMANY

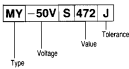
Ref. No.	Description	A	A1	B	B1	C	CI
TUNER PCB ASSY							
CO02	CERAMIC CAPACITOR	UP0508221K	UP0508221K	UP0508221K	UP0508221K	NIL	NIL
D155	DIODE	1S8176	1S8176	1S8176	1S8176	MAT00	MAT00
FD01-003	10.7MHZ FILTER	SFE10.7MHLK-A	SFE10.7MHLK-A	SFE10.7MHLK-A	SFE10.7MHLK-A	SFE10.7MHLK-A	SFE10.7MHLK-A
FD01	FRONT END	F019A	F019A	F019A	F019A	F019A	F019A
NC001-001	CERAMIC CAPACITOR	NIL	NIL	NIL	NIL	TP050F232	TP050F232
NC1001	IC	NIL	NIL	NIL	NIL	UPC11638A	UPC11638A
NR001,002	CARBON RESISTOR	NIL	NIL	NIL	NIL	KA168T331J	KA168T331J
NR003	CARBON RESISTOR	NIL	NIL	NIL	NIL	KA25T220J-LP	KA25T220J-LP
NR14	CARBON RESISTOR	KA168T124J	KA168T124J	KA168T124J	KA168T124J	KA168T124J	KA168T124J
NR63	CARBON RESISTOR	KA168T222J	KA168T222J	KA168T222J	KA168T222J	KA168T124J	KA168T124J
NR64	CARBON RESISTOR	KA168T223J	KA168T223J	KA168T223J	KA168T223J	NIL	NIL
NR61	CARBON RESISTOR	KA168T104J	KA168T104J	KA168T104J	KA168T104J	KA168T224J	KA168T224J
NR11	CARBON RESISTOR	KA168T104J	KA168T104J	KA168T104J	KA168T104J	KA168T224J	KA168T224J
FILL CONTROL PCB ASSY							
NR15	CONNECTOR	NIL	NIL	B2B-PH-K	B2B-PH-K	B2B-PH-K	B2B-PH-K
PR080	CARBON RESISTOR	NIL	NIL	KA168T153J	KA168T153J	KA168T153J	KA168T153J
SR 1	SOLDER-PLATED WIRE	NIL	NIL	00T8260A10-C-J	00T8260A10-C-J	00T8260A10-C-J	00T8260A10-C-J
SWM INDICATORS PCB ASSY							
PD015, 016	DIODE	NIL	NIL	1S8176	1S8176	1S8176	1S8176
MAIN AMP 1 CH PCB ASSY							
DE21	ELECTROLYTIC CAPACITOR	NS100T4WR7M	NS100T4WR7M	NS100T4WR7M	NS100T4WR7M	NS100T4WR7M	NS100T4WR7M
DE31	ELECTROLYTIC CAPACITOR	NS100T4WR7M	NS100T4WR7M	NS100T4WR7M	NS100T4WR7M	NS100T4WR7M	NS100T4WR7M
DE51	FLAME PROOF RESISTOR	FR25T563J	FR25T563J	FR25T563J	FR25T563J	FR25T563J	FR25T563J
MAIN AMP 8 CH PCB ASSY							
DE22	ELECTROLYTIC CAPACITOR	NS100T4WR7M	NS100T4WR7M	NS100T4WR7M	NS100T4WR7M	NS100T4WR7M	NS100T4WR7M
DE32	ELECTROLYTIC CAPACITOR	NS100T4WR7M	NS100T4WR7M	NS100T4WR7M	NS100T4WR7M	NS100T4WR7M	NS100T4WR7M
DE52	FLAME PROOF RESISTOR	FR25T563J	FR25T563J	FR25T563J	FR25T563J	FR25T563J	FR25T563J
MAIN POWER SUPPLY PCB ASSY							
FW001-401	FUSE	FU-621034-312	FU-621034-312	FU-621039P	FU-621039P	FU-621039P	FU-621039P
PR03	TERMINAL PIN	WB-3	WB-3	NIL	NIL	NIL	NIL
11814	FUSE HOLDER	S-46051	S-46051	Z1615102-BB-C	Z1615102-BB-C	Z1615102-BB-C	Z1615102-BB-C
SN 2-1	FUSE LABEL	NIL	NIL	N41853-103	N41853-103	N41853-103	N41853-103
SPAKER TERMINAL PCB ASSY							
YK31-012	TERMINAL PIN	YK31-0344	YK31-0344	YK31-0344	YK31-0344	YK31-0344	YK31-0344
REAR POWER SUPPLY PCB ASSY							
EC13, 814	METALLIZED FILM CAPACITOR	ECQ01A103MH	ECQ01A103MH	ECQ01A103MH	ECQ01A103MH	ECQ01A103MH	ECQ01A103MH
NC415	MICRO SOCKET	KA25T470J	KA25T470J	KA25T101J	KA25T101J	KA25T101J	KA25T101J
NR13	CARBON RESISTOR	KA25T470J	KA25T470J	KA25T101J	KA25T101J	KA25T101J	KA25T101J
NR17	CARBON RESISTOR	KA25T335J	KA25T335J	NIL	NIL	NIL	NIL
RL001	RELAY	VS12MB-NR-VL	VS12MB-NR-VL	VS12MB-NR-VD3	VS12MB-NR-VD3	VS12MB-NR-VD3	VS12MB-NR-VD3
1426	CABLE ASSY	R-31V1827	R-31V1827	67S2600R25-C-D	67S2600R25-C-D	67S2600R25-C-D	67S2600R25-C-D
1428	SOLDER-PLATED WIRE	R-31V1622	R-31V1622	NIL	NIL	NIL	NIL
1428	CABLE ASSY	R-31V1622	R-31V1622	67S2600Y20-C-D	67S2600Y20-C-D	67S2600Y20-C-D	67S2600Y20-C-D
1428	SOLDER-PLATED WIRE	R-31V1622	R-31V1622	67S2600Y20-C-D	67S2600Y20-C-D	67S2600Y20-C-D	67S2600Y20-C-D
8Q FUNCTION SMALL PCB ASSY							
C405,406	CERAMIC CAPACITOR	HR138JYV475Z	HR138JYV475Z	HR138JYV475Z	HR138JYV475Z	HR138JYV475Z	HR138JYV475Z
MC415	CONNECTOR	NZ02-635	NZ02-635	NZ02-635	NZ02-635	NZ02-635	NZ02-635
MC416	CONNECTOR	NZ02-636	NZ02-636	NZ02-636	NZ02-636	NZ02-636	NZ02-636
FLAME SWITCH PCB ASSY							
CS73-378	CERAMIC CAPACITOR	NIL	NIL	NIL	NIL	NIL	NR063JLT71K
CS73-384	CERAMIC CAPACITOR	NIL	NIL	NIL	NIL	NIL	NIL
FUSE PCB ASSY (EOP A1, B1, C, CI)							
48820	PRINTED CIRCUIT BOARD	NIL	FU-7118	FU-7118	FU-7118	FU-7118	FU-7118
FD811, 812	FUSE	NIL	FU-521029T-5M	FU-521029T	FU-521029T	FU-521029T	FU-521029T
PR02	TERMINAL PIN	NIL	WA-4	WA-4	WA-4	WA-4	WA-4
PR13	TERMINAL PIN	NIL	WB-3	WB-3	WB-3	WB-3	WB-3
20R21	FUSE HOLDER	NIL	S-46051	Z1615102-BB-C	Z1615102-BB-C	Z1615102-BB-C	Z1615102-BB-C
SN 1-1	FUSE LABEL	NIL	N42852-103	NIL	NIL	NIL	NIL
FRONO INPUT JACK PCB ASSY (EOP CI)							
4821	PRINTED CIRCUIT BOARD	NIL	NIL	NIL	NIL	NIL	FJ-776
C405,406	1EL. CERAMIC CAPACITOR	NIL	NIL	NIL	NIL	NIL	2C0602JYV4732K
NR415	MICRO SOCKET	NIL	NIL	NIL	NIL	NIL	NC02-697
NR416	MICRO SOCKET	NIL	NIL	NIL	NIL	NIL	NC02-696
PC401,402	CERAMIC CAPACITOR	NIL	NIL	NIL	NIL	NIL	NR0603PL51KXP
PL401,402	CHOKER COIL	NIL	NIL	NIL	NIL	NIL	100049
PR401,402	CARBON RESISTOR	NIL	NIL	NIL	NIL	NIL	KA168T222J
RJ401	RCA JACK 2P	NIL	NIL	NIL	NIL	NIL	TS880-AAAA
REAR PANEL AND CHASSIS							
FU01	FUSE	FU-621034-314	FU-621034-314	FU-525029P	FU-525029P	FU-525029P	FU-525029P
RJ401	RCA JACK 2P	TS880-AAAA	TS880-AAAA	TS880-AAAA	TS880-AAAA	TS880-AAAA	TS880-AAAA
T901	POWER TRANSFORMER	NPT-2324S	NPT-2324S	NPT-2327S	NPT-2327S	NPT-2325S	NPT-2325S
T901	POWER TRANSFORMER	NPT-2324S	NPT-2324S	NPT-2327S	NPT-2327S	NPT-2325S	NPT-2325S
47R 3	AC OUTLET	AC-T01F933	AC-T01F933	SS-729T-100	SS-729T-100	SS-729T-100	SS-729T-100
47R 4	FUSE HOLDER	FM-03C	FM-03C	FM-033	FM-033	FM-033	FM-033
47R 6	LINE COORD	ACC-02D25-4E81	ACC-02D25-4E81	ACC-04D26-4K81	ACC-04D26-4K81	ACC-04D26-4K81	ACC-04D26-4K81
47R 7	COORD STOPPER	SR-4M-4	SR-4M-4	SR-5M-4	SR-5M-4	SR-5M-4	SR-5M-4
47R14	TERMINAL STOCK	NIL	NIL	NIL	NIL	NIL	NIL
47R15	LUG	NIL	NIL	NIL	NIL	NIL	NIL
2H 3	REAR PANEL	NIL	NIL	NIL	NIL	NIL	NIL
4N23	TERMINAL COVER	N1044-1A	N1044-1A	N1048B-2A	N1048B-2A	N1048B-1A	N1048B-1A
4N25	INSULATION SHEET	N45182	N45182	N45333	N45182	N45333	N45333
4N27	SPACER	NIL	NIL	N45366	N45366	NIL	NIL
8M22	TAP SCREW S, BIND HEAD, B	NIL	NIL	NIL	NIL	NIL	NIL
9H13	NUT, HEXAGONAL HEAD	NIL	NIL	NIL	NIL	NIL	NIL
PACKING							
47E28	REMOTE CONTROL TRANSMITTER	RC-1001-UAE	RC-1001-UAEFG	RC-1001-UAEFG	RC-1001-UAEFG	RC-1001-UAEFG	RC-1001-UAEFG
47E28	MATCHING ADAPTOR	NIL	NIL	YAF11-0329	NIL	YAF11-0329	YAF11-0329
SN 7	CARD, WARRANTY REGISTRATION	N44062A	N44062A	NIL	NIL	NIL	NIL
SN13	INSTRUCTION MANUAL	NIL	OM-824	NIL	NIL	OM-824	OM-824
SN14	INSTRUCTION MANUAL	NIL	N40612A-1	N45012	N40612A-1	N40612A-1	N40612A-1
SN1	POLYETHYLENE BAG UNIT	N40612A-1	N40612A-1	N45012	N40612A-1	N40612A-1	N40612A-1
OTHER PARTS							
SH 5	LABEL, FUSE	N11939	N11939	NIL	NIL	NIL	NIL
SH 1-2	LABEL, DEP	NIL	NIL	NIL	NIL	NIL	N41680
SH 8	LABEL, SA1965(LIGHTNING FLASH)	N44043	N44043	NIL	NIL	NIL	NIL
SH 9	NAME, WARRANTY CARD	NIL	LEN-201	NIL	NIL	NIL	NIL
SN10	CARD, WARRANTY	NIL	LEN-201	NIL	NIL	NIL	NIL
SN24	STICKERS, MARKING	NIL	N41994	NIL	NIL	NIL	NIL
SN28	SAFETY INSTRUCTION SHEET	SN285	SN285	NIL	NIL	NIL	NIL
SN28	CAUTION SHEET, POLARIZED PLUG	N44687A	N44687A	NIL	NIL	NIL	NIL
SN30	LABEL, VOLTAGE	N45367	N45367	NIL	NIL	NIL	NIL
1W32	SOLDER-PLATED WIRE	67S2600B6-D-D	67S2600B6-D-D	67S2600D11-D-D	67S2600D11-D-D	67S2600B06-D-D	67S2600B06-D-D
1W24	SOLDER-PLATED WIRE	67S2600T19-D-D	67S2600T19-D-D	67S2600T19-D-D	67S2600T19-D-D	67S2600T19-D-D	67S2600T19-D-D
1W27	SOLDER PLATED WIRE	67S2600T19-D-D	67S2600T19-D-D	67S2600T19-D-D	67S2600T19-D-D	67S2600T19-D-D	67S2600T19-D-D
2W10	UL TPEE TUBE	US-3-8810	US-3-8810	US-400810	US-400810	US-400810	US-400810

Capacitors Description

• Electrolytic



• Mylar - Styrol



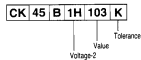
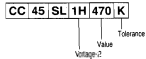
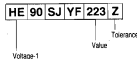
• Electrolytic

Type	Voltage	Value	Tolerance
LL: Low Leak	-10: 10V	R47: 0.47 μ F	K: \pm 10%
NP: Non-Pole	-50: 50V	4R7: 4.7 μ F	M: \pm 20%
NS: Standard	6R3: 6.3V	470: 47 μ F	
		471: 470 μ F	
		472: 4700 μ F	

• Mylar - Styrol

Type	Voltage	Value	Tolerance
MY: Mylar	-25V: 25V	4R7: 4.7pF	G: \pm 2%
ST: Styrol	125V: 125V	470: 47pF	J: \pm 5%
	-63T: 63V	471: 470pF	K: \pm 10%
		472: 4700pF	M: \pm 20%
		473: 0.047 μ F	
		474: 0.47 μ F	
		(1000pF=0.001 μ F)	

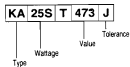
• Ceramic



Voltage-1	Voltage-2	Value	Tolerance
HC: 25V	1E: 25V	4R7: 4.7pF	C: \pm 0.25pF
HE: 50V	1H: 50V	470: 47pF	D: \pm 0.5pF
H: 100V	2H: 500V	471: 470pF	F: \pm 1pF
HK: 250V		472: 4700pF	J: \pm 5%
HM: 500V		473: 0.047 μ F	K: \pm 10%
		474: 0.47 μ F	M: \pm 20%
		(1000pF=0.001 μ F)	Z: +80--20%

Resistors Description

• Fixed

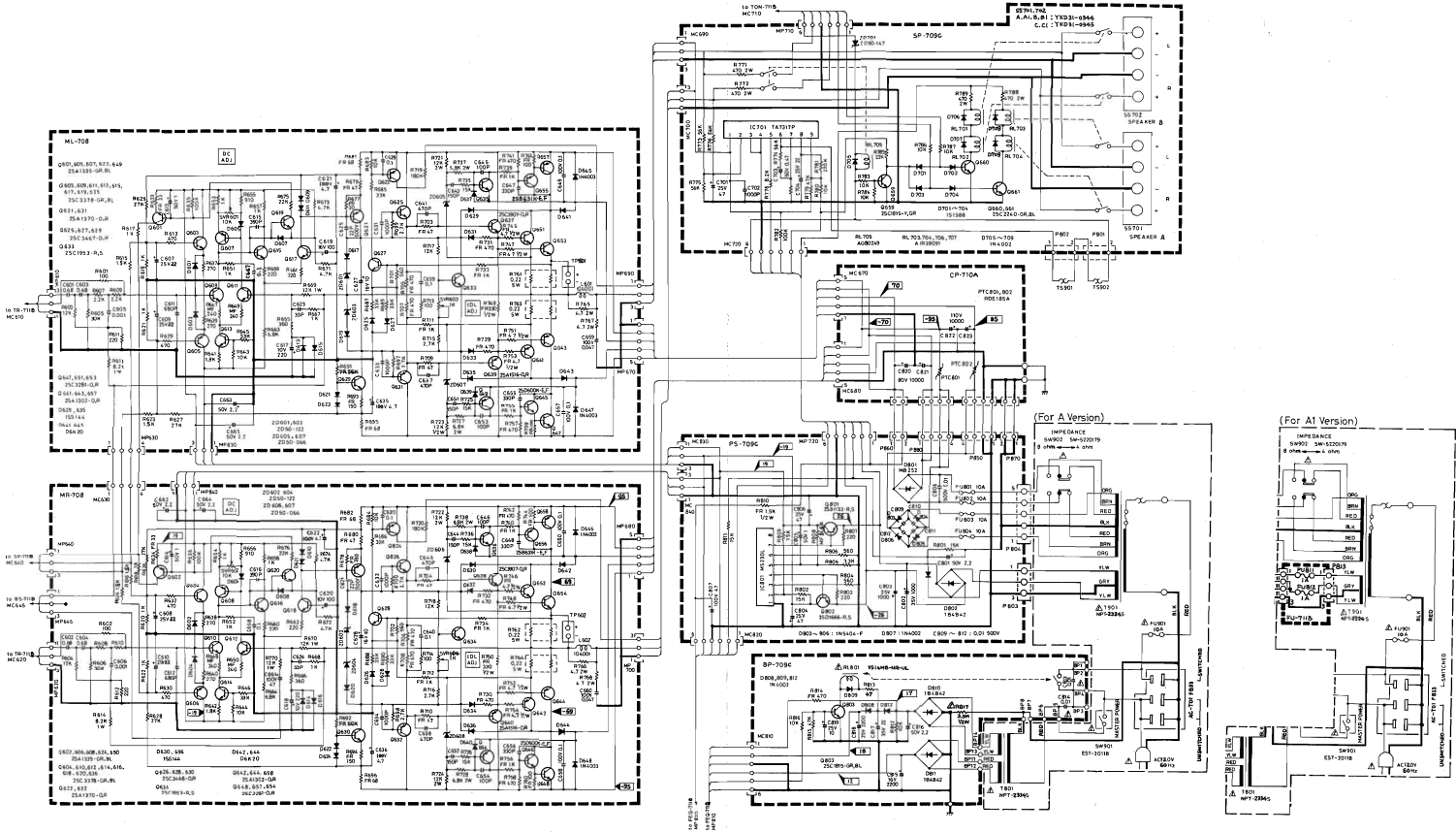


• Semi-Variable

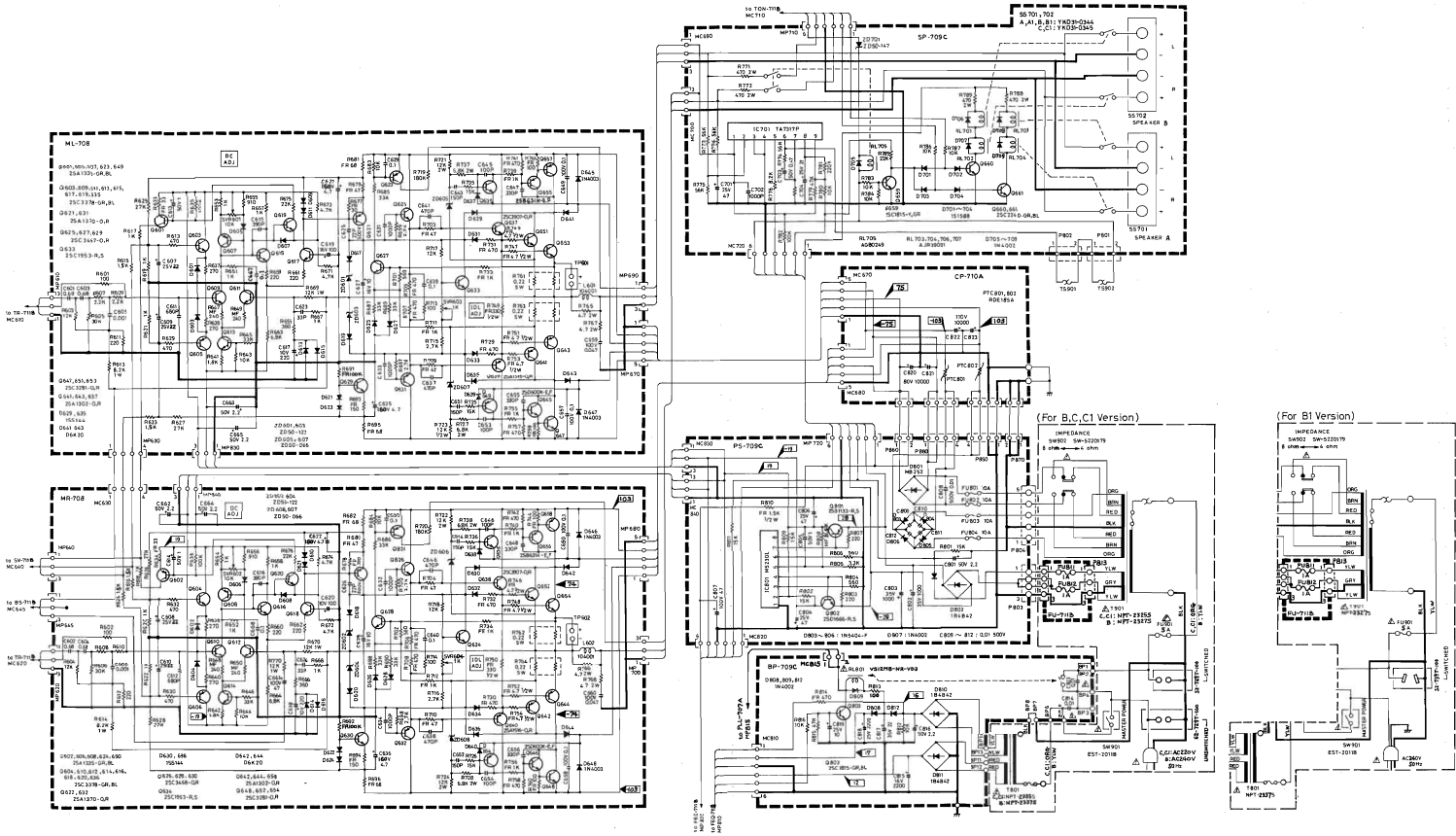


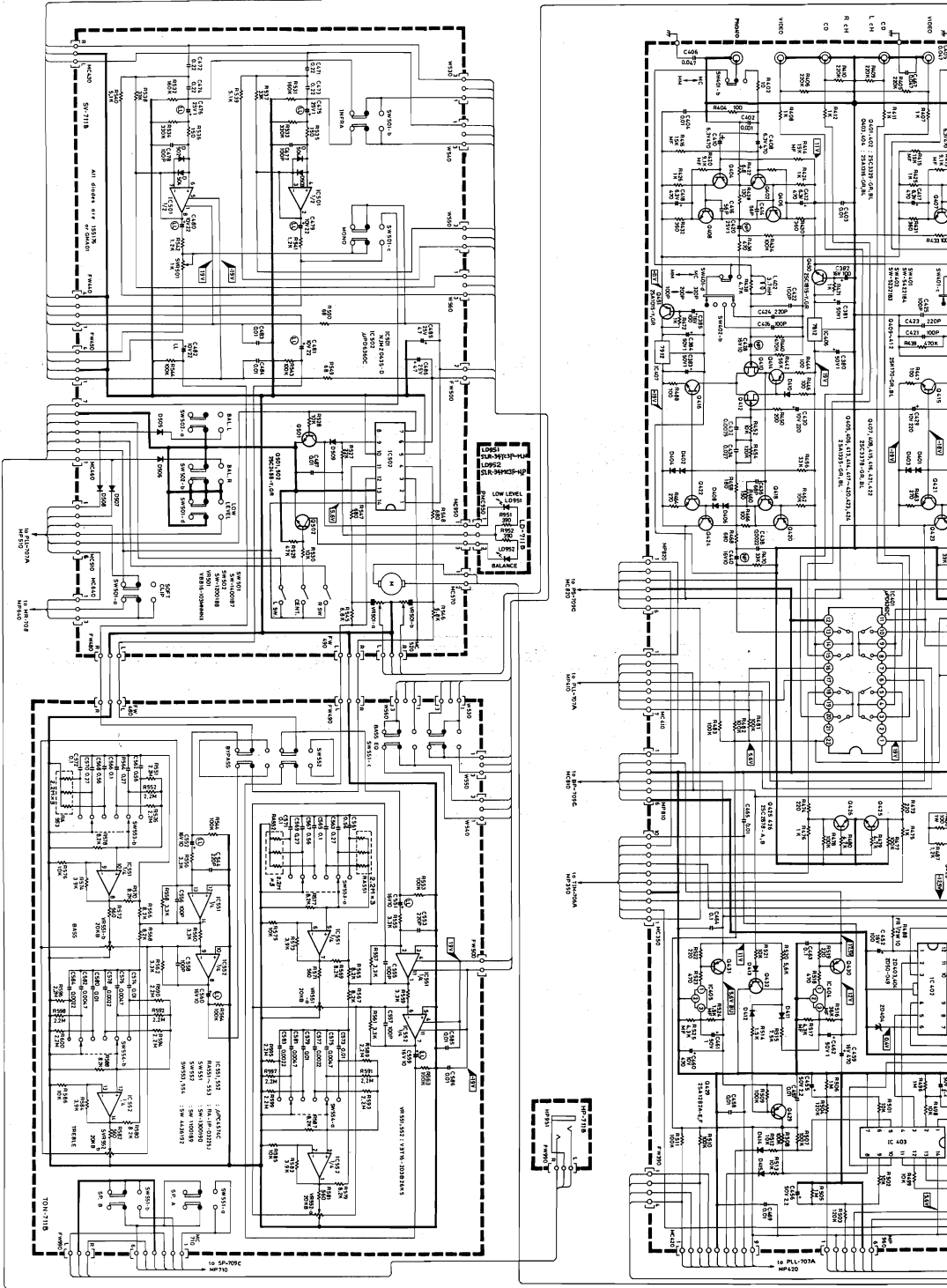
Type	Wattage	Value	Tolerance	Diameter
CE: Cement Case	-2W: 2W	R47: 0.47 Ω	M: \pm 20%	08: 8p
FR: Flame Proof	10W: 10W	4R7: 4.7 Ω	K: \pm 10%	10: 10p
KA: Carbon	16S: 16W	470: 47 Ω	J: \pm 5%	06: 6p
MF: Metal Film	20S: 16W	471: 470 Ω	G: \pm 2%	
RF: Fusible	25S: 14W	472: 4.7k Ω	F: \pm 1%	
SA: Metal Oxide	50S: 12W	473: 47k Ω	D: \pm 0.5%	
	50X: 12W	474: 470k Ω		
	3W: 475: 4.7M Ω			

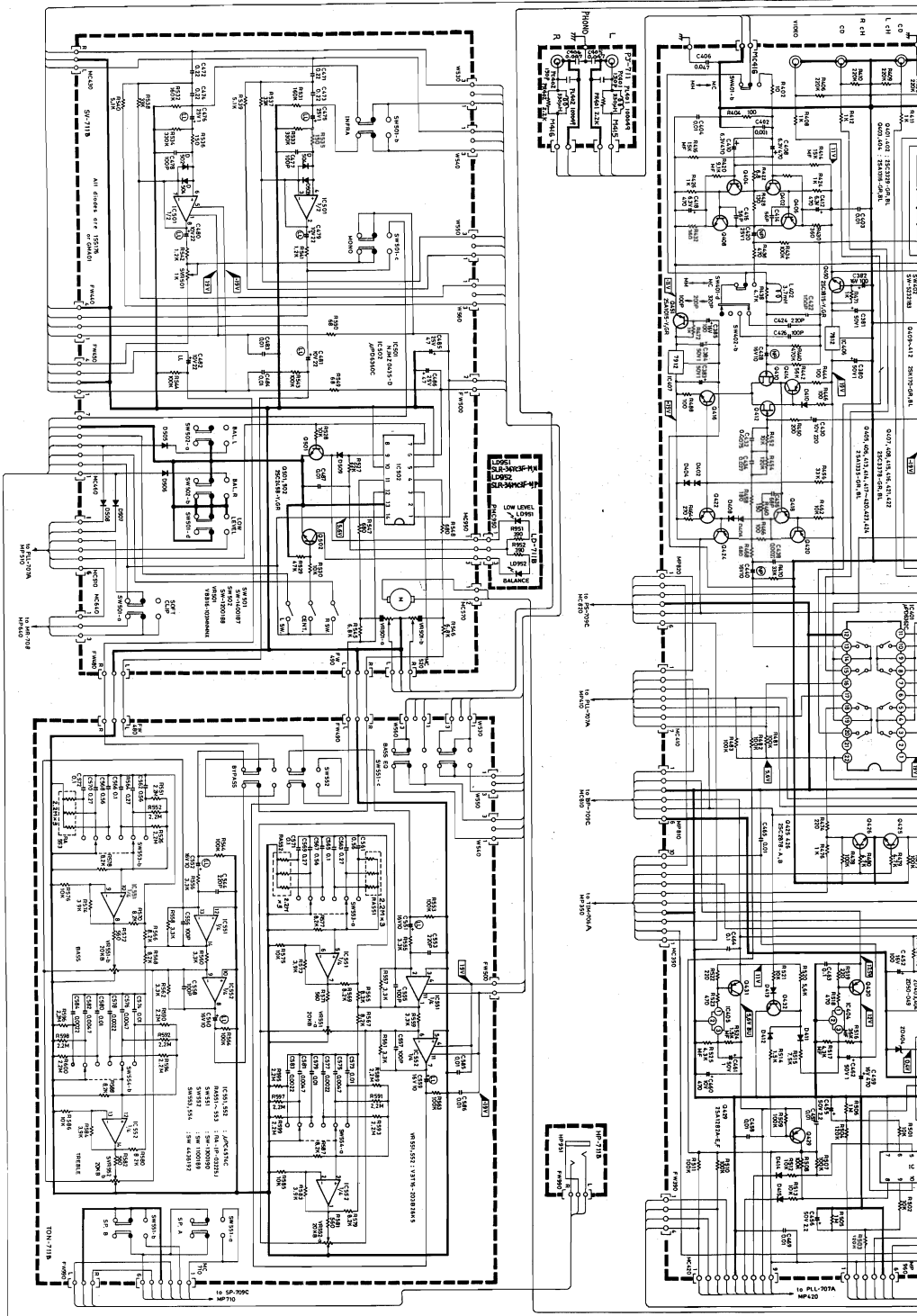
Main Amp and Power Supply
(For A, A1 Version)

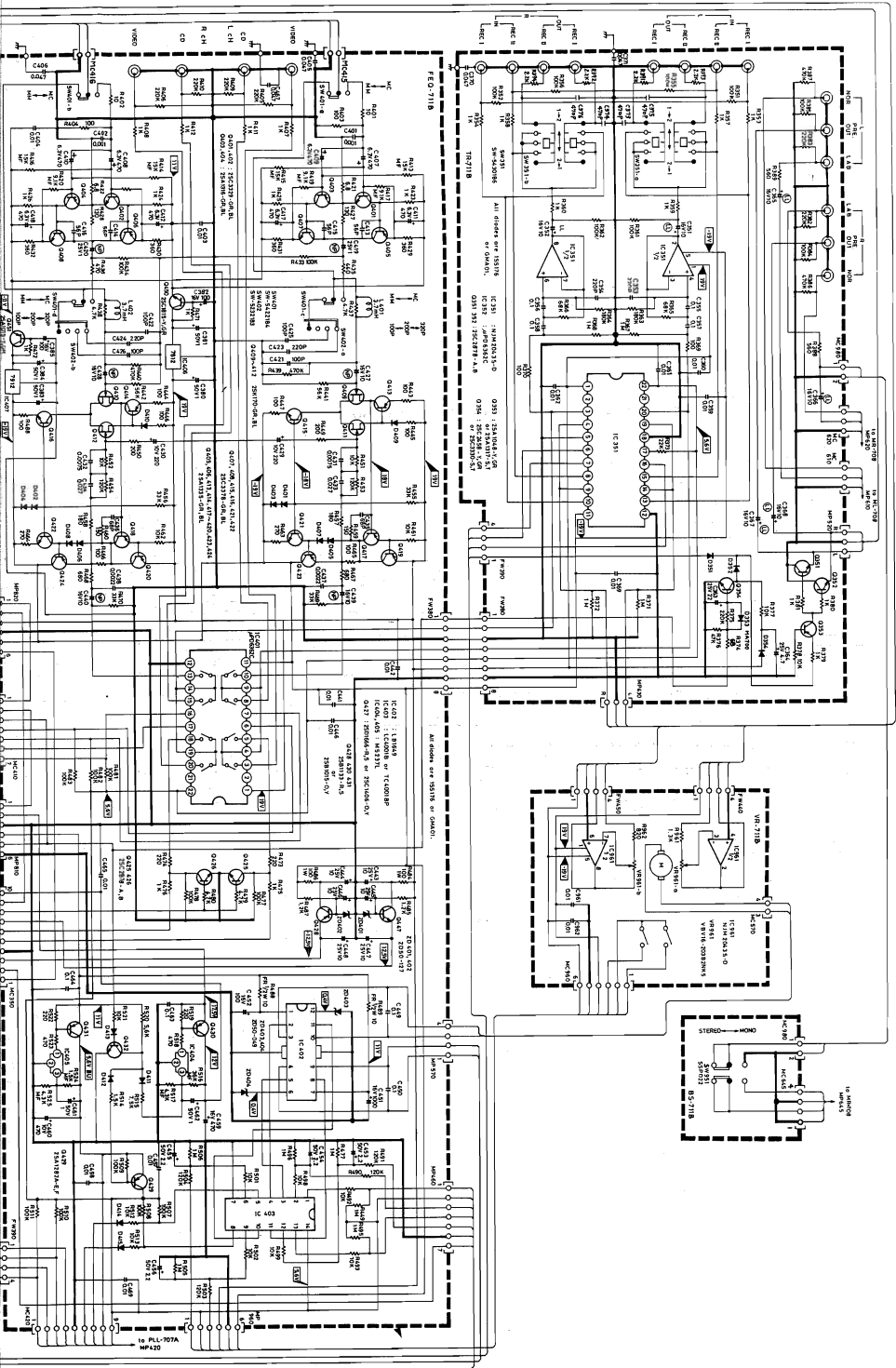


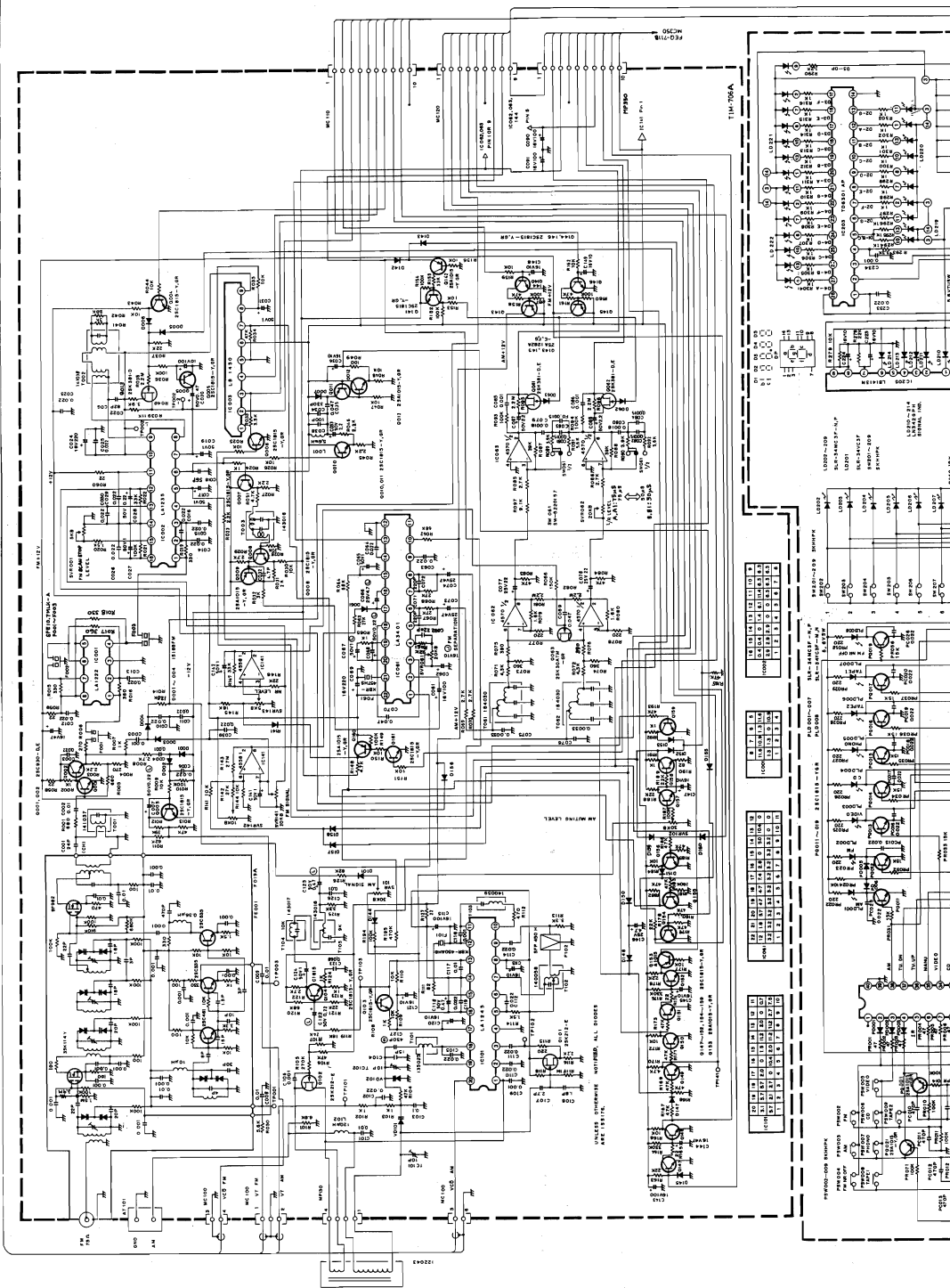
(For B, B1, C, C1 Version)

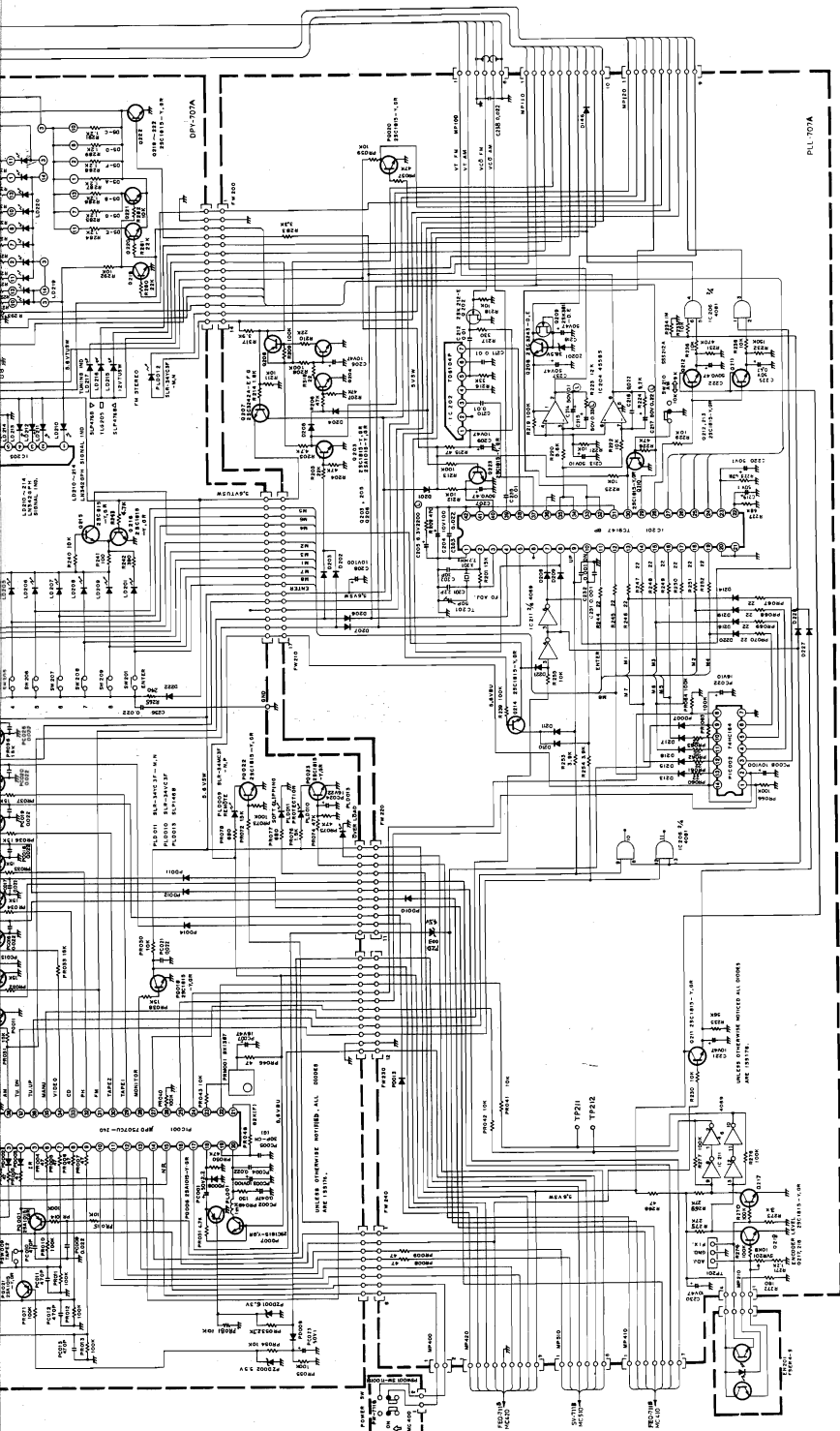










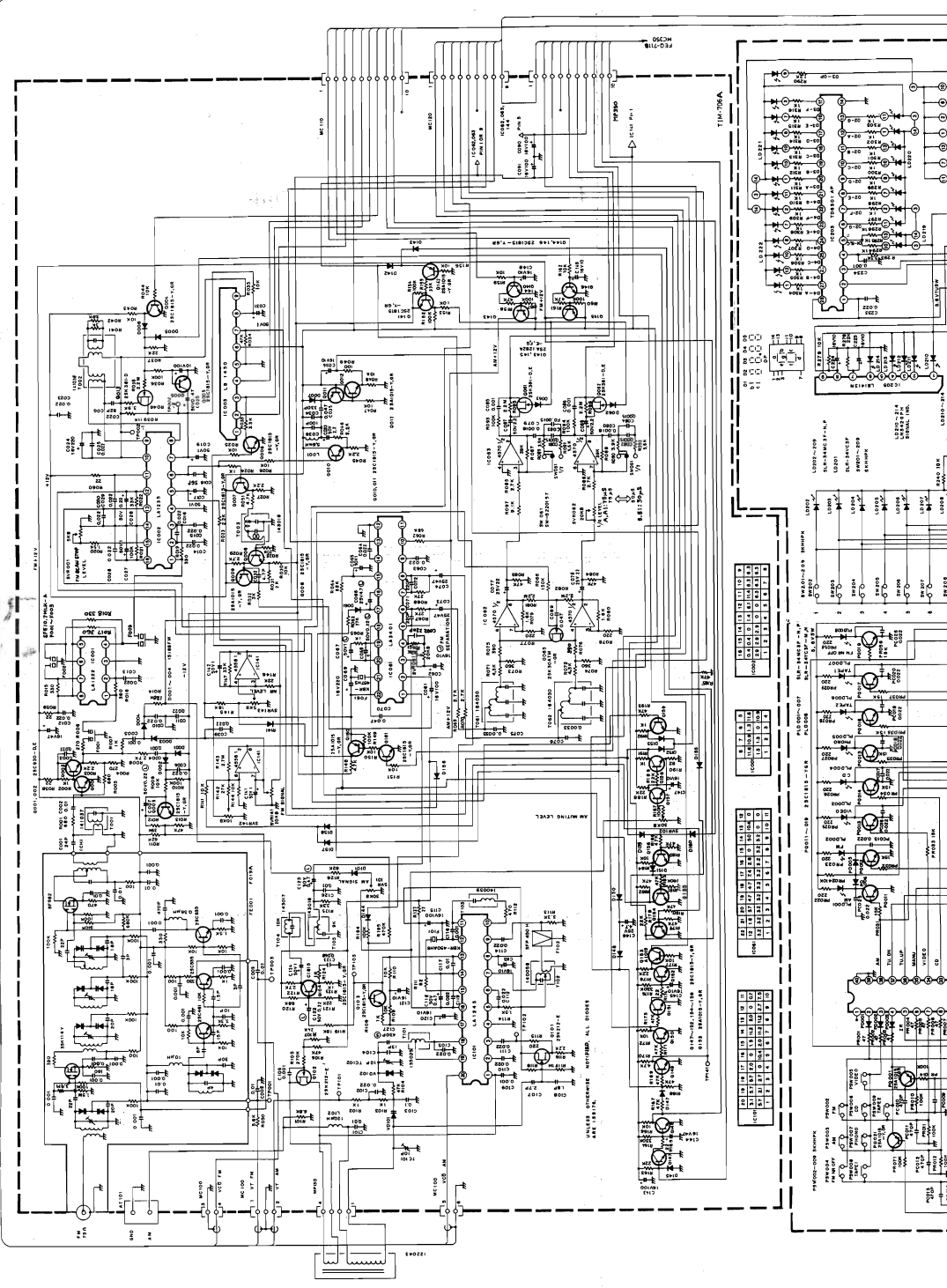


PLU-100A

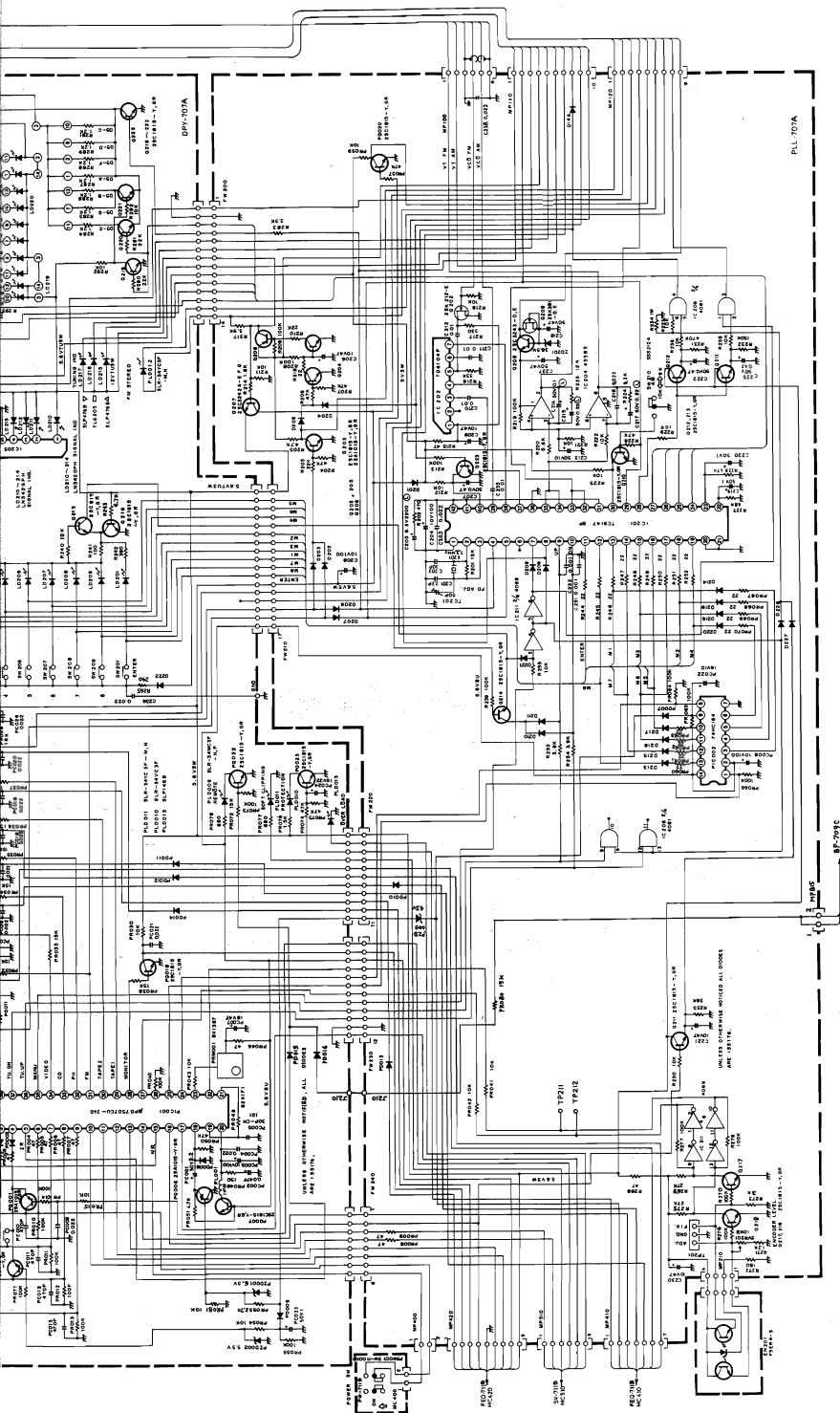
PLU-100A

PLU-100A

PLU-100A



ALL DIMENSIONS NOMINAL. ALL DIMENSIONS IN INCHES.



FULL 101A

BP-701C
PC-61E

FIGURE 1

